

National University
SOKENDAI
The Graduate University for Advanced Studies
2017 — 2018

School of Cultural and Social Studies

Department of Regional Studies
Department of Comparative Studies
Department of Japanese Studies
Department of Japanese History
Department of Japanese Literature

School of Physical Sciences

Department of Structural Molecular Science
Department of Functional Molecular Science
Department of Astronomical Science
Department of Fusion Science
Department of Space and Astronautical Science

School of High Energy Accelerator Science

Department of Accelerator Science
Department of Materials Structure Science
Department of Particle and Nuclear Physics

School of Multidisciplinary Sciences

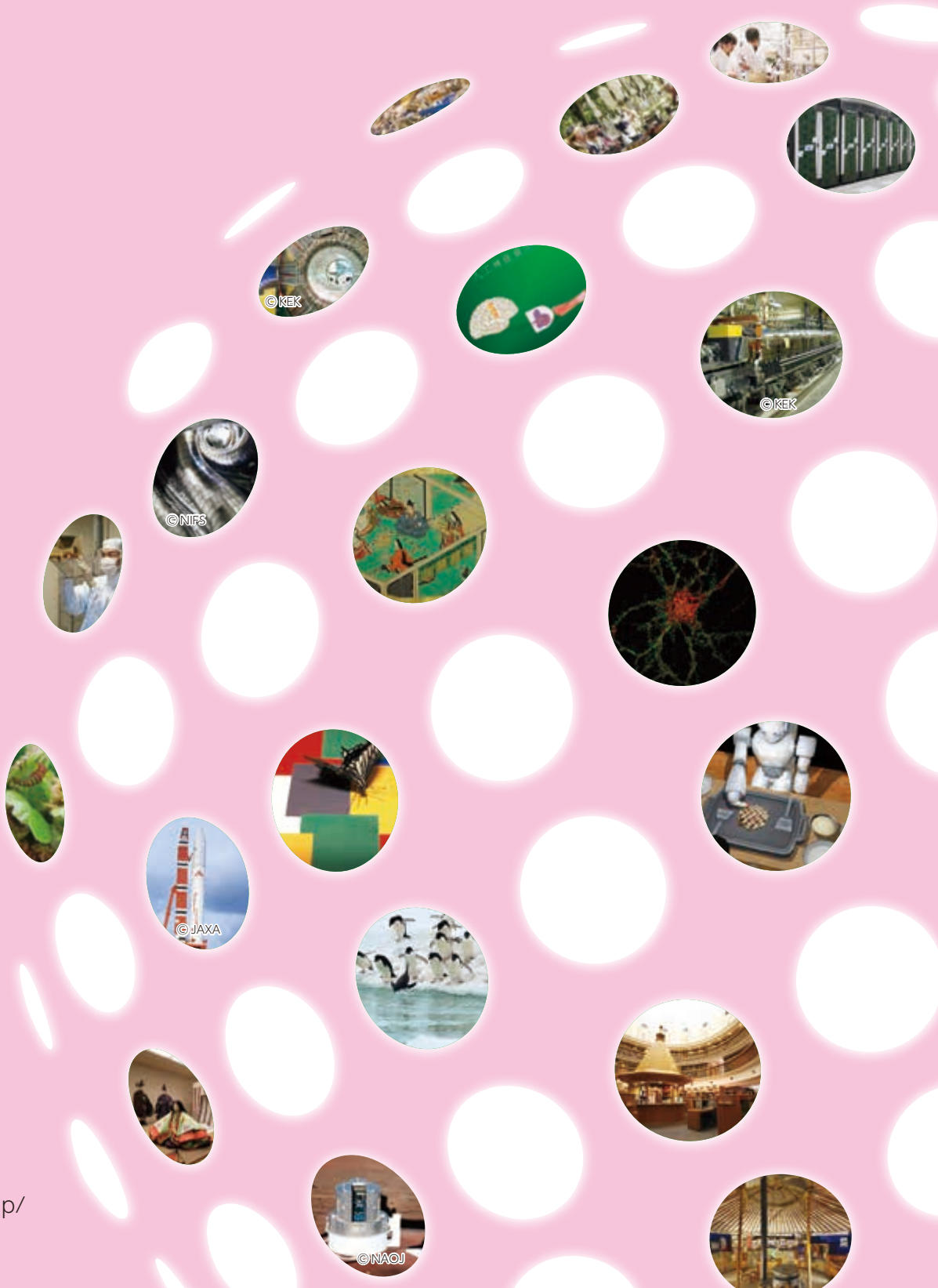
Department of Statistical Science
Department of Polar Science
Department of Informatics

School of Life Science

Department of Genetics
Department of Basic Biology
Department of Physiological Sciences

School of Advanced Sciences

Department of Evolutionary Studies of Biosystems



Contents

Message from the President	3
Inter-university research institutes participating in SOKENDAI	6
History	8
Organization	9
Administrative Organization	9
Research and Education System	11

● School of Cultural and Social Studies

School of Cultural and Social Studies	12
Regional Studies	12
Comparative Studies	13
Japanese Studies	13
Japanese History	14
Japanese Literature	14

● School of Physical Sciences

School of Physical Sciences	15
Structural Molecular Science	15
Functional Molecular Science	16
Astronomical Science	16
Fusion Science	17
Space and Astronautical Science	17

● School of High Energy Accelerator Science

School of High Energy Accelerator Science	18
Accelerator Science	18
Materials Structure Science	19
Particle and Nuclear Physics	19

● School of Multidisciplinary Sciences

School of Multidisciplinary Sciences	20
Statistical Science	20
Polar Science	21
Informatics	21

● School of Life Science

School of Life Science	22
Genetics	22
Basic Biology	23
Physiological Sciences	23

● School of Advanced Sciences

School of Advanced Sciences	24
Evolutionary Studies of Biosystems	24

Interdepartmental Program	25
The Center for the Promotion of Integrated Sciences	27
The Center for Academic Information Services	30
University Library	30
Division of Information Services and Technology	31
Office of Promotion for International and Social Affairs	32
International Cooperation Office	32
Public Relations Office	34
Society and Community Outreach Activities	35
SOKENDAI People	36
Education Data	38
Access	43



Message from the President



SOKENDAI (The Graduate University for Advanced Studies) is a graduate university with no undergraduate programs that consists of departments housed in affiliated Inter-University Research Institutes and the School of Advanced Sciences attached directly to SOKENDAI. The Inter-University Research Institutes are research centers for joint use by universities throughout Japan in their various research fields. As such, these institutes serve as centers of advanced research in their respective research fields and as nodes of scholarly communication that support international joint research. The School of Advanced Sciences, which is located in Hayama and has no such parent institute, conducts advanced research into the evolution of life and the relationship between science and society.

SOKENDAI was founded in October 1988 on the internationally unprecedented idea of educating graduate students at outstanding centers of research to cultivate future generations of scholars. The year 2018 will thus mark SOKENDAI's 30th anniversary.

At SOKENDAI, students are educated at Japan's leading centers of research. Their lives are very different from those of students in graduate programs attached to ordinary undergraduate faculties, especially for students who enroll in our five-year programs straight from their undergraduate studies and pursue their graduate studies and research surrounded by professional researchers and scholars. Faculty outnumber students by more than two-to-one. Students have access not only to equipment and materials unavailable elsewhere but also to a community of top-ranked scholars. While this environment provides amazing opportunities for doctoral dissertation research, it may also be more stressful in some ways than an ordinary university.

This is why every department, with the full support of SOKENDAI, looks after its students and takes steps to ensure that time spent in the department is productive and enjoyable. All our students are encouraged to take full advantage of this distinctive research environment as they pursue their doctoral dissertation research.

"Advanced specialties and expertise," "broad perspective," and "international competitiveness" have been the educational goals of SOKENDAI since its founding. As mentioned above, students are educated at centers of research, so "Advanced specialties and expertise" and "international competitiveness" are perhaps something they naturally learn. But what of a "broad perspective"? A "broad perspective" entails the ability to explain one's object of research in the broader terms of human intellectual activity in general and to envision new horizons that transcend current disciplinary boundaries. Acquiring these abilities in the course of writing a doctoral dissertation can be hard. Still, I hope students will endeavor to gain this broader perspective at every opportunity by taking full advantage of SOKENDAI's unique characteristics, including its various departments that collectively encompass a broad range of intellectual fields, from energy, materials, space, and life to information, history and culture.

Universities and basic research in Japan today face challenging circumstances. Likewise, there are issues regarding SOKENDAI's future growth as an institution of higher learning that need our serious attention. Yet, whatever difficult challenges may lie ahead in this uncertain age, we will face them each and every day as first-class researchers and scholars dedicated to working in cooperation with everyone concerned to produce future generations of global professionals.

April 1, 2017

A handwritten signature in black ink, reading "M. Hasegawa".

Hasegawa, Mariko, Ph. D.
President

SOKENDAI (The Graduate University for Advanced Studies)

Profile

Graduation from School of Science, University of Tokyo.

Ph.D. degree in Anthropology from Graduate School of Science, University of Tokyo.

Worked at the Tanzania Wildlife Service, as an assistant at the Laboratory of Anthropology, Department of Biological Science, Graduate School of Science, University of Tokyo.

She taught as an associate professor and professor at Senshu University, as an associate professor at the Department of Anthropology at Yale University and as a professor at the School of Political Science and Economics, Waseda University, became a professor at the Graduate University for Advanced Studies in 2006, in 2007 dean of Department of Evolutionary Studies of Biosystems at the Graduate University for Advanced Studies, in 2011 then dean of School of Advanced Sciences, became Executive Director at the Graduate University for Advanced Studies in 2014. From April in 2017, became President of the Graduate University for Advanced Studies.

She specialized in Behavioral Ecology and Physical Anthropology, conducted research on wild chimpanzee, fallow deer and wild sheep in Great Britain, peafowl in Sri Lanka. Recently she is conducting research on human evolution and adaptation.

In 2008, she became President of the Human Behavior and Evolution Society of Japan and received the Hidaka Award from the Japan Ethological Society in 2012.



Main features of SOKENDAI (The Graduate University for Advanced Studies)

Unique doctoral courses and education programs

- Three- or five-year term Ph. D. courses
- Education programs on research sites in individual “Inter-University Research Institutes”
- Tailor-made education programs
- Admission programs for foreigners and full-fledged members of society

Fostering advanced specialties and expertise

- Supervision of student researches by top-level researchers in individual fields
- Specialty-education programs in diverse research fields
- Nagakura Research Incentive Award/SOKENDAI Scientist Award/Future Scientist Award
- Practical use of collections of archives, unique equipments and facilities in “Inter - University Research Institutes”

Cultivating wide vision

- Offerings of the SOKENDAI Freshman Course
- Joint education and research activities among Departments or Schools
- Cross-disciplinary education through distance learning systems
- Utilization of internship systems in Japan and abroad

Achieving international competitiveness

- Education under international atmosphere by top-level researchers of science and technology
- Education programs of oral presentation skills
- Student programs for overseas research experiences
- Joint education with “the International Priority Graduate Programs (PGP) –Advanced Graduate Courses for International Students–”

Creating new inter-disciplinary and cutting-edge fields

- Offerings of the Interdepartmental Education Program for new fields
- Promotion of four key operations through the Center for the Promotion of Integrated Sciences
- Promotion of “Science and Society” program
- Construction of academic networks among SOKENDAI alumni (SOKENDAI-Anet)

Establishment Objectives / Purpose of Establishment

In recent years, there has been a strong demand for the promotion of original and international research and the opening up of advanced scientific fields that transcend the boundaries of existing scientific disciplines.

SOKENDAI (The Graduate University for Advanced Studies), the first of its kind in Japan, was established to cultivate researchers capable of responding to such demands. It offers the advantage of enabling students to carry out research in the most advanced research environment of Inter-University Research Institutes, which operate under the auspices of the Ministry of Education, Culture, Sports, Science and Technology (MEXT). These institutes conduct advanced research in a variety of fields, and play a central role in the promotion of joint research.

SOKENDAI was established to foster creative international researchers with wide-ranging vision who are capable of leading the latest trends in research.

The University will promote original and international research and open up new scientific fields that transcend the boundaries of existing scientific disciplines.



Inter-University Research Institutes

Inter-University Research Institutes (referred to as "IURI" hereafter) house large scale, high-technical facilities, high-level laboratories, or various academic data and archives. They are accessible for any university researchers who would collaboratively interact each other, using these facilities.

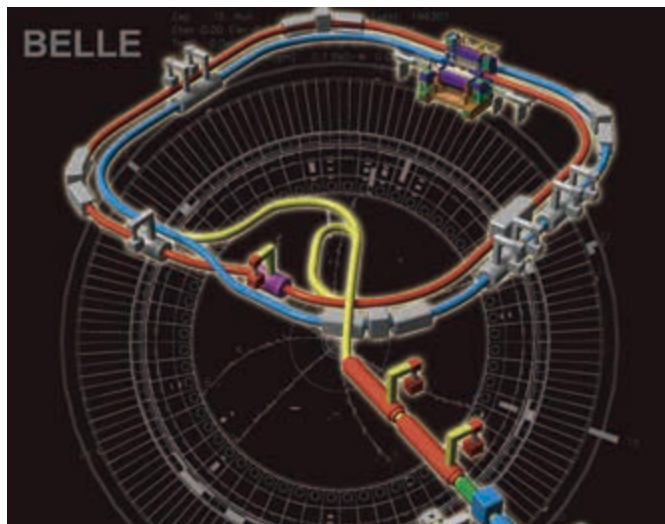
Have you ever heard, either on TV or in a newspaper, of the largest telescope in the world, the Subaru telescope, on the big island of Hawaii, or of the observation vessel, the Shirase, heading to the South Pole? Both of them are related to IURI, affiliated with SOKENDAI; the Subaru telescope was established by the National Astronomical Observatory, and the polar observation is carried out by the National Institute of Polar Research.

Most of the research activities involve fundamental scientific studies which demand large-scale facilities and a large budget. IURIs have a great number of researchers and a large amount of research grants are made available to carry out original and advanced scientific research.



Advanced specialist education in research facilities and general education cultivating broad views

Ph. D. programs at SOKENDAI provide an ideal education and research environment, offering direct access to large-scale or special experiment/observation facilities, as well as academic materials and data at world-class research institutes in Japan (IURI). In our Ph. D. programs, students can be in daily communication with cutting-edge researchers in Japan and abroad as one of the leading international research centers. Having 2~3 faculty members per student, SOKENDAI offers, in a custom-made manner, both advanced specialist education and general education cultivating broad views.



Inter-University Research Institutes participating in SOKENDAI (The Graduate University for Advanced Studies)

① The Graduate University for Advanced Studies [Hayama campus]

The Center for the Promotion of Integrated Sciences
The Center for Academic Information Services
University Library
Department of Evolutionary Studies of Biosystems
(School of Advanced Sciences)
Shonan Village, Hayama, Kanagawa 240-0193 Japan
TEL: 81-46-858-1500
FAX: 81-46-858-1542
URL: <https://www.soken.ac.jp>

② National Institutes for the Humanities National Museum of Ethnology

Department of Regional Studies
Department of Comparative Studies
(School of Cultural and Social Studies)
10-1 Senri Expo Park, Suita, Osaka, 565-8511 Japan
TEL: 81-6-6878-8236
URL: <http://www.minpaku.ac.jp>

③ National Institutes for the Humanities International Research Center for Japanese Studies

Department of Japanese Studies
(School of Cultural and Social Studies)
3-2 Oeyama-cho, Goryo, Nishikyoku, Kyoto, 610-1192 Japan
TEL: 81-75-335-2222
URL: <http://www.nichibun.ac.jp/en/>

④ National Institutes for the Humanities National Museum of Japanese History

Department of Japanese History
(School of Cultural and Social Studies)
117 Jonai-cho, Sakura-shi, Chiba, 285-8502 Japan
TEL: 81-43-486-0123
URL: <http://www.rekihaku.ac.jp>

⑤ National Institutes for the Humanities National Institute of Japanese Literature

Department of Japanese Literature
(School of Cultural and Social Studies)
10-3, Midori-cho, Tachikawa, Tokyo 190-0014 Japan
URL: <http://www.nijl.ac.jp>

⑥ National Institutes of Natural Sciences Institute for Molecular Science

Department of Structural Molecular Science
Department of Functional Molecular Science
(School of Physical Sciences)
URL: <https://www.ims.ac.jp/en/>

⑦ National Institutes of Natural Sciences National Institute for Basic Biology

Department of Basic Biology
(School of Life Science)
URL: <http://www.nibb.ac.jp/en>

⑧ National Institutes of Natural Sciences National Institute for Physiological Sciences

Department of Physiological Sciences
(School of Life Science)
URL: <http://www.nips.ac.jp/eng>
38 Nishigonaka, Myodaiji, Okazaki, 444-8585 Japan
TEL: 81-564-55-7000

⑨ National Institutes of Natural Sciences National Astronomical Observatory

Department of Astronomical Science
(School of Physical Sciences)
2-21-1 Osawa, Mitaka, Tokyo, 181-8588 Japan
TEL: 81-422-34-3600
URL: <http://www.nao.ac.jp>

⑩ National Astronomical Observatory (Mizusawa)

2-12 Hoshigaoka, Mizusawa, Oshu, Iwate, 023-0861 Japan
TEL: 81-197-22-7111

⑪ National Astronomical Observatory (Nobeyama)

462-2 Nobeyama, Minamimakimura, Minamisaku, Nagano, 384-1305 Japan
TEL: 81-267-98-4300

⑫ National Astronomical Observatory (Okayama)

3037-5 Honjo, Kamogata, Asakuchi, Okayama, 719-0232 Japan
TEL: 81-865-44-2155

⑬ National Astronomical Observatory (Hawaii)

650 North A'ohoku Place, Hilo, Hawaii 96720 U.S.A.
TEL: 1-808-934-7788

⑭ National Astronomical Observatory (Chile)

Calle Joaquin Montero 3000, Oficina 702, Vitacura, Santiago, Chile
TEL: 56-2-2656-9253

⑮ National Institutes of Natural Sciences National Institute for Fusion Science

Department of Fusion Science
(School of Physical Sciences)
322-6, Oroshi-cho, Toki, Gifu, 509-5292 Japan
TEL: 81-572-58-2222
URL: <http://www.nifs.ac.jp>

⑯ Japan Aerospace Exploration Agency Institute of Space and Astronautical Science

Department of Space and Astronautical Science
(School of Physical Sciences)
3-1-1, Yoshinodai, Chuo-ku, Sagami-hara, Kanagawa, 252-5210 Japan
TEL: 81-42-759-8012
URL: <http://www.isas.jaxa.jp/sokendai/e/>

Kauai

Oahu

Maui

Island of Hawaii

Antarctica

⑰ High Energy Accelerator Research Organization (Tsukuba Campus)

Accelerator Laboratory · Applied Research Laboratory
Department of Accelerator Science
(School of High Energy Accelerator Science)
Institute of Materials Structure Science
Department of Materials Structure Science
(School of High Energy Accelerator Science)
Institute of Particle and Nuclear Studies
Department of Particle and Nuclear Physics
(School of High Energy Accelerator Science)
1-1 Oho, Tsukuba, Ibaraki, 305-0801 Japan
TEL: 81-29-864-1171 or 5128
URL: <http://www.kek.jp>

⑱ High Energy Accelerator Research Organization (Tokai Campus)

203-1 Oaza-Shirakata, Tokai-Mura, Naka-gun, Ibaraki, 319-1106 Japan

⑲ Research Organization of Information and Systems The Institute of Statistical Mathematics

Department of Statistical Science
(School of Multidisciplinary Sciences)
10-3 Midori-cho, Tachikawa, Tokyo, 190-8562 Japan
TEL: 81-42-5533-8500
URL: http://www.ism.ac.jp/index_e.html

⑳ Research Organization of Information and Systems National Institute of Polar Research

Department of Polar Science
(School of Multidisciplinary Sciences)
10-3 Midori-cho, Tachikawa, Tokyo, 190-8518 Japan
TEL: 81-42-512-0608
URL: <http://www.nipr.ac.jp>

㉑ National Institute of Polar Research SYOWA STATION

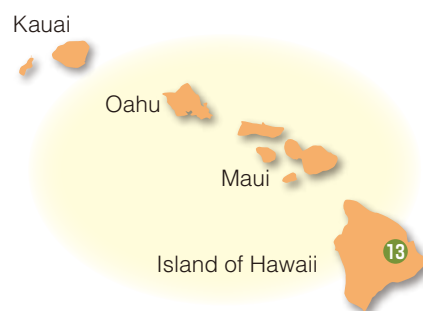
Department of Polar Science
(School of Multidisciplinary Sciences)

㉒ Research Organization of Information and Systems National Institute of Informatics

Department of Informatics
(School of Multidisciplinary Sciences)
2-1-2 Hitotsubashi, Chiyoda-ku, Tokyo, 101-8430 Japan
TEL: 81-3-4212-2110
URL: <http://www.nii.ac.jp/en/>

㉓ Research Organization of Information and Systems National Institute of Genetics

Department of Genetics
(School of Life Science)
1111 Yata, Mishima, 411-8540 Japan
TEL: 81-55-981-6720
URL: <https://www.nig.ac.jp>



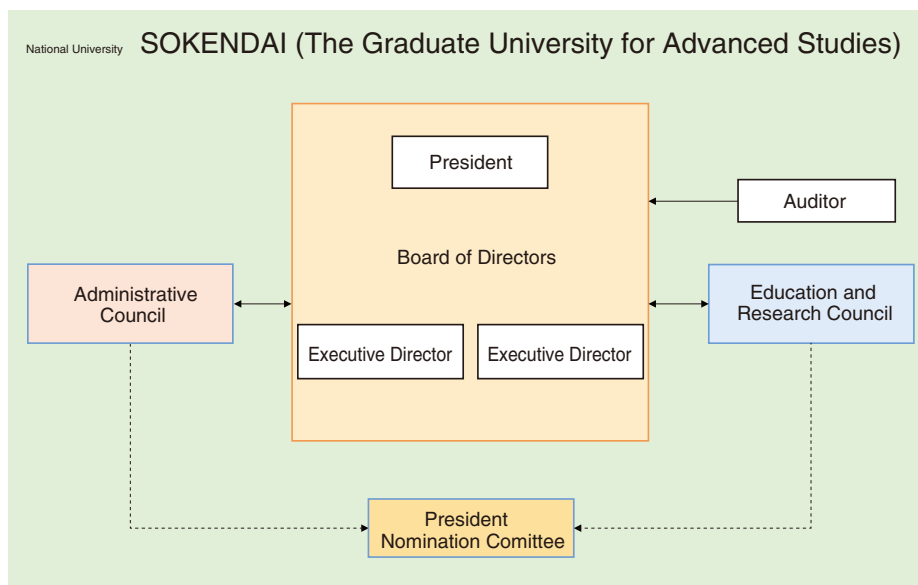


History

June 1982	An informal committee of the directors general of international university research institutes issues an appeal for the introduction of post-graduate courses in the institutes.	September 1998	Construction of the School of Advanced Sciences building for research (3,060m ²) begins at the Hayama Campus.
April 1986	An informal committee of the directors general of inter-national university research institutes produces a summary of the basic concepts of a postgraduate school for advanced studies based on the results of an investigation by a working group set up to investigate issues related to postgraduate schools. An Office and Committee for the Investigation of the Preparation of the Establishment of a Postgraduate School for Advanced Studies are established at Okazaki National Research Institutes.	April 1999	The School of Cultural Studies changes its name to "The School of Cultural and Social Studies." The Department of Japanese History is established in the School of Cultural and Social Studies, and The Department of Particle and Nuclear Physics is established in the School of Mathematical and Physical Science; matriculation begins in both new Departments. The School of Advanced Sciences commences matriculation.
March 1987	The Committee for the Investigation of the Preparation of the Establishment of a Postgraduate School for Advanced Studies produces a summary of the basic concepts of a postgraduate school for advanced studies.	June 1999	Construction is completed on the research building for the School of Advanced Sciences.
May 1987	An Office and Committee for Preparation of the Establishment of a Postgraduate School for Advanced Studies are established at Okazaki National Research Institutes.	April 2001	Dr. Keiichi Kodaira is appointed as the third President. Dr. Naoyuki Takahata is appointed as the third Vice President. The Department of Cyber Society and Culture (School of Cultural and Social Studies) is established; matriculation begins.
July 1987	The Committee for Preparation of the Establishment of a Postgraduate School for Advanced Studies produces an interim summary on the preparation of the establishment of a tentatively named the Graduate University for Advanced Studies.	July 2001	Construction of the University Library (1,427m ²) begins at the Hayama Campus.
April 1988	An Office and Committee for Preparation of the Establishment of the Graduate University for Advanced Studies are established at Okazaki National Research Institutes.	February 2002	Construction of the University Library is completed.
May 1988	The "Law to amend part of the National School Establishment Law" (Law No. 63, 1988), which stipulates the establishment of the Graduate University for Advanced Studies, is announced and enacted.	April 2002	Department of Informatics established in the School of Mathematical and Physical Science; matriculation begins.
September 1988	The Committee for Preparation of the Establishment of the Graduate University for Advanced Studies produces a summary of the preparation of the establishment of the Graduate University for Advanced Studies.	April 2003	Department of Japanese Literature (School of Cultural and Social Studies), and the Department of Space and Astronautical Science (School of Mathematical and Physical Science) are established; matriculation begins.
October 1988	The Graduate University for Advanced Studies is inaugurated. The central administration office is established at the Tokyo Institute of Technology (Nagatsuda Campus).	October 2003	"The National University Corporation Law (Law No. 112 of 2003)" is promulgated and enforced.
	<div> School of Mathematical and Physical Science <ul style="list-style-type: none"> •Department of Statistical Science •Department of Accelerator Science •Department of Synchrotron Radiation Science •Department of Structural Molecular Science •Department of Functional Molecular Science </div> <div> School of Life Science <ul style="list-style-type: none"> •Department of Genetics •Department of Molecular Biomechanics •Department of Physiological Science </div>	April 2004	Reformation into the National University Corporation, Graduate University for Advanced Studies Dr. Sc. Keiichi Kodaira is reappointed as the President of the University. The School of Mathematical and Physical Science is reformed into three schools: the School of Physical Science (including the departments of Structural Molecular Science, Functional Molecular Science, Astronomical Science, Fusion Science and Space and Astronautical Science), the School of High Energy Accelerator Science (including the departments of Accelerator Science, Materials Structure Science, Particle and Nuclear Physics), and the School of Multidisciplinary Science (including the departments of Statistical Science, Polar Science and Informatics). The School of Life Science has implemented the five-year Ph.D. program system in addition to the three-year system. The School has begun to accept students.
	(The university commences matriculation from April 1989.) Dr. Saburo Nagakura is appointed as the first President of the University.	April 2005	The name of the Department of Molecular Biomechanics at the School of Life Science has changed to the Department of Basic Biology.
April 1989	The School of Cultural and Social Studies is established with the Department of Regional Studies and Department of Comparative Studies. The University commences matriculation of students for three schools.	April 2006	The School of Physical Sciences, the School of High Energy Accelerator Science, and the School of Multidisciplinary Sciences have implemented the five-year Ph.D. program system in addition to the three-year system. The Schools have begun to accept students.
January 1990	Dr. Eizi Hirota is appointed as the first Vice President of the University.	April 2007	The School of Advanced Sciences has reorganized the Department of Biosystems Science and the Department of Photo Science (both have provided only 3-year doctoral course) into the Department of Evolutionary Studies of Biosystems (which offers both 3-year and 5-year doctoral course) and started accepting students into the new department.
April 1991	The Coordination Center for Research and Education is established.	April 2008	Dr. Naoyuki Takahata has been appointed as the fourth President.
April 1992	The Department of Japanese Studies (School of Cultural and Social Studies), and the Departments of Astronomical Science and Fusion Science (School of Mathematical and Physical Science) are established; matriculation begins.	April 2009	The Department of Cyber Society and Culture has stopped accepting new students.
April 1993	The Department of Polar Science (School of Mathematical and Physical Science) is established; matriculation begins.	March 2010	Construction of the Center for the Promotion of Integrated Sciences(1,033m ²) begins at the Hayama Campus.
February 1994	Land in Hayama, Kanagawa (27,000m ²), is donated by Mitsui Fudosan Ltd. to allow the construction of the University's central administration office, as a result of the mediation services of the Kanagawa prefectural government.	April 2010	The name of Hayama Center for Advanced Studies has changed to the Center for the Promotion of Integrated Sciences.
March 1994	Construction of the central administration office (4,205m ²) begins at the Hayama Campus.	January 2011	Construction of the Center for the Promotion of Integrated Sciences is completed.
June 1994	The Information Center for Research and Education is established.	April 2013	Information Services and Technology Center is established.
February 1995	Administrative functions are transferred from Nagatsuda Campus to Hayama; construction is completed on the central administration building.	April 2014	Dr. Yasunobu Okada has been appointed as the fifth President.
April 1995	Dr. Eizi Hirota is appointed as the second President. Dr. Kazuo Moriaki is appointed as the second Vice President.	July 2015	The Center for Academic Information Services was established by unification of the University Library and the Information Services and Technology Center.
April 1997	The School of Advanced Sciences, with the Department of Biosystems Science, is established at the Hayama Campus (matriculation begins in April 1999).	March 2017	Department of Cyber Society and Culture abolished. (Dept. operation period from 2001.4.1 to 2017.3.31)
April 1998	The Department of Photoscience (School of Advanced Sciences) is established (matriculation begins in April 1999). The Department of Synchrotron Radiation Science changes its name to "The Department of Materials Structure Science."	April 2017	Dr. Mariko Hasegawa has been appointed as the sixth President.

Organization

Administrative Organization



Administrative Board

As of April 1, 2017

President
Executive Director
Executive Director
Auditor
Auditor

Hasegawa, Mariko
Nakamura, Yukio
Nagata, Takashi
Takeda, Hiroshi
Nakamoto, Fuminori

Vice President
Presidential Aide

Nagata, Takashi
Tamura, Katsumi

School of Cultural and Social Studies

Dean Yamashita, Noriko
Chair of the Department of Regional Studies Saito, Akira
Chair of the Department of Comparative Studies Hirai, Kyonosuke
Chair of the Department of Japanese Studies Ito, Takayuki
Chair of the Department of Japanese History Sakamoto, Minoru
Chair of the Department of Japanese Literature Ochiai, Hiroshi

School of Physical Sciences

Dean Ishikawa, Takehiko
Deputy Dean Uozumi, Yasuhiro
Chair of the Department of Structural Molecular Science Aono, Shigetoshi
Chair of the Department of Functional Molecular Science Kawai, Maki
Chair of the Department of Astronomical Science Hayashi, Masahiko
Chair of the Department of Fusion Science Takeiri, Yasuhiko
Chair of the Department of Space and Astronautical Science Inatomi, Yuko

School of High Energy Accelerator Science

Dean Ogawa, Yujiro
Deputy Dean Uno, Shoji
Deputy Dean Kamiyama, Takashi
Chair of the Department of Accelerator Science Honda, Tohru
Chair of the Department of Materials Structure Science Kawata, Hiroshi
Chair of the Department of Particle and Nuclear Physics Hashimoto, Shoji

School of Multidisciplinary Sciences

Dean Imura, Satoshi
Deputy Dean Yoneda, Tomohiro
Chair of the Department of Statistical Science Miyasato, Yoshihiko
Chair of the Department of Polar Science Motoyama, Hideaki
Chair of the Department of Informatics HU, Zhenjiang

School of Life Science

Dean Iwasato, Takuji
Deputy Dean Araki, Hiroyuki
Chair of the Department of Genetics Katsura, Isao
Chair of the Department of Basic Biology Yamamoto, Masayuki
Chair of the Department of Physiological Sciences Imoto, Keiji

School of Advanced Sciences

Dean Sasaki, Akira
Chair of the Department of Evolutionary Studies of Biosystems Arikawa, Kentaro

University Library

Acting Director Nakamura, Yukio
Deputy Director Yagyu, Shuji

The Center for the Promotion of Integrated Sciences

Director Satta, Yoko
Deputy Director Hongo, Hitomi

The Center for Academic Information Services

Acting Director Nakamura, Yukio

Headquarters

Secretary-General Higano, Takashi
Director of General Affairs Kobayashi, Jun
Director of Financial Affairs Maeda, Terunobu
Director of Academic and Students Affairs Itaba, Naoaki
Director of International and Social Affairs Kamei, Takeshi

Education and Research Council As of April 1, 2017

President	Hasegawa, Mariko
Executive Director	Nakamura, Yukio
Executive Director (Executive Vice President)	Nagata, Takashi
Dean of School of Cultural and Social Studies	Yamashita, Noriko
Dean of School of Physical Sciences	Ishikawa, Takehiko
Dean of School of High Energy Accelerator Science	Ogawa, Yujiro
Dean of School of Multidisciplinary Sciences	Imura, Satoshi
Dean of School of Life Science	Iwasato, Takuji
Dean of School of Advanced Sciences	Sasaki, Akira
Chair of the Department of Regional Studies	Saito, Akira
Chair of the Department of Japanese Studies	Ito, Takayuki
Chair of the Department of Japanese History	Sakamoto, Minoru
Chair of the Department of Japanese Literature	Ochiai, Hiroshi
Chair of the Department of Functional Molecular Science	Kawai, Maki
Chair of the Department of Astronomical Science	Hayashi, Masahiko
Chair of the Department of Fusion Science	Takeiri, Yasuhiko
Professor of the Department of Space and Astronautical Science	Matsuhara, Hideo
Chair of the Department of Accelerator Science	Honda, Tohru
Chair of the Department of Materials Structure Science	Kawata, Hiroshi
Professor of the Department of Particle and Nuclear Physics	Tokushuku, Katsuo
Chair of the Department of Statistical Science	Miyasato, Yoshihiko
Chair of the Department of Polar Science	Motoyama, Hideaki
Chair of the Department of Informatics	HU, Zhenjiang
Chair of the Department of Genetics	Katsura, Isao
Chair of the Department of Basic Biology	Yamamoto, Masayuki
Chair of the Department of Physiological Sciences	Imoto, Keiji
Chair of the Department of Evolutionary Studies of Biosystems	Arikawa, Kentaro
Professor of the Department of Comparative Studies	Yoshida, Kenji
Professor of the Department of Japanese Studies	Komatsu, Kazuhiko
Professor of the Department of Japanese History	Kurushima, Hiroshi
Professor of the Department of Statistical Science	Higuchi, Tomoyuki
Professor of the Department of Polar Science	Shiraishi, Kazuyuki

Administrative Council As of April 1, 2017

Internal representatives

President	Hasegawa, Mariko
Executive Director	Nakamura, Yukio
Executive Director (Executive Vice President)	Nagata, Takashi

Secretary-General	Higano, Takashi
-------------------	-----------------

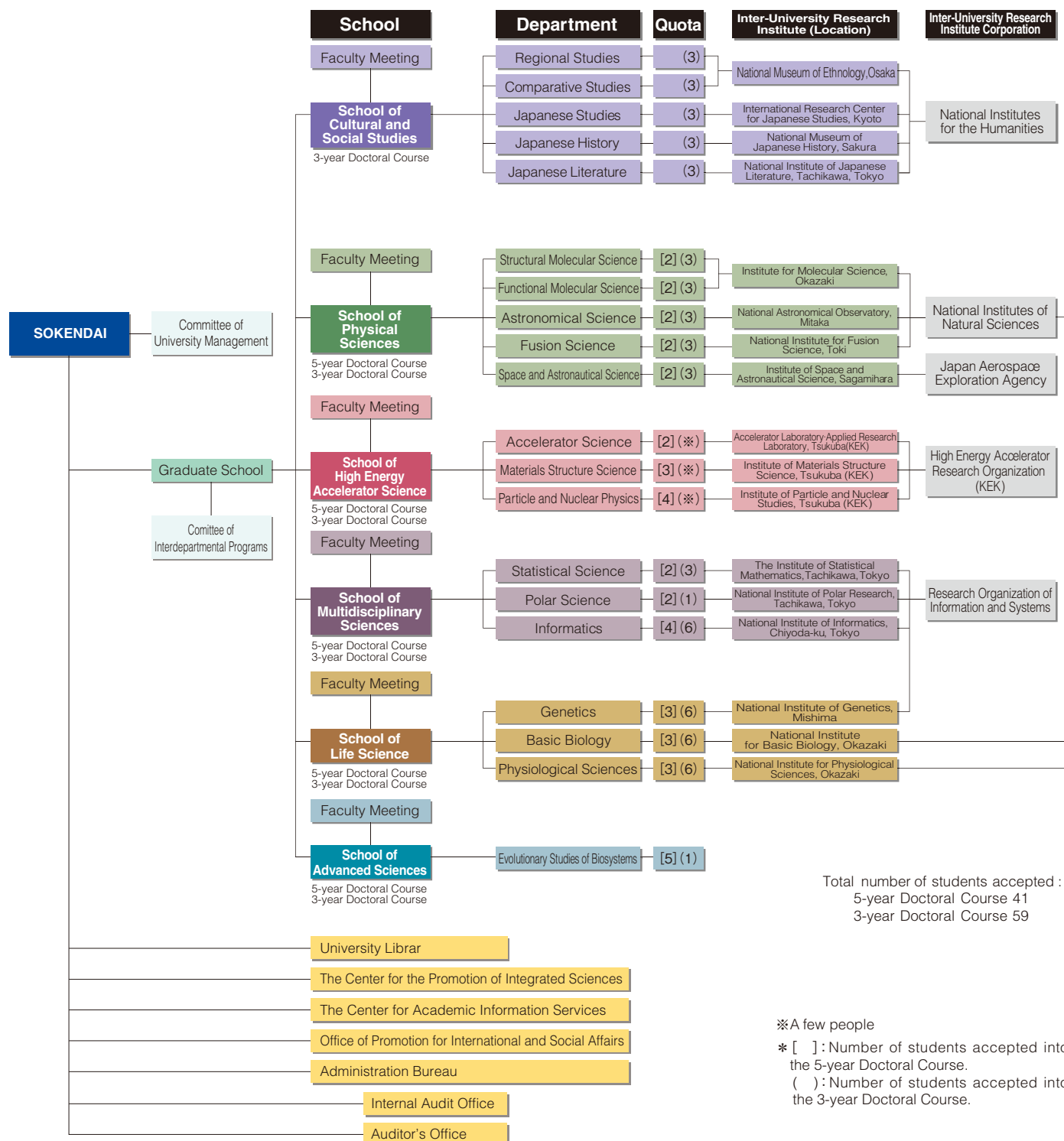
External academics and specialists

Executive Director, Institute of Space and Astronautical Science, Japan Aerospace Exploration Agency	Tsuneta, Saku
Chief Executive Director, National Museum of Emerging Science and Innovation	Mohri, Mamoru
President, National Institutes for the Humanities	Tachimoto, Narifumi
President, Research Organization of Information and Systems	Fujii, Ryoichi
Professor, Research Institute for Science and Technology, Tokyo University of Science	Kuroda, Reiko
Adviser, Shiseido Co., Ltd.	Genma, Akira
Trustee, Nagoya University	Go, Mitiko
Professor/Executive Officer, University of Tsukuba	Tokunaga, Tamotsu
President, National Institutes of Natural Sciences	Komori, Akio
Director General, High Energy Accelerator Research Organization	Yamauchi, Masanori
Director, Tamarokuto Science Center	Takayanagi, Yuichi
Director General, National Institute of Informatics, Research Organization of Information and Systems	Kitsuregawa, Masaru

Research and Education System

SOKENDAI is affiliated with parent institutes ("Kiban Kikan," in Japanese), consisting of 17 Inter-University Research Institutes operated by four Inter-University Research Institute Corporations and one research institute of the Japan Aerospace Exploration Agency. SOKENDAI offers both a "dispersed" and an "integrated" research and education system: "dispersed" in that research and education on discipline-specific, advanced are carried out at each parent institute; "integrated" in that interdisciplinary research and education, including those in disciplines in which the parent institutes specialize, are provided. SOKENDAI also offers interschool/departmental education programs that meet new academic wishes and development.

University Organization (2017)



School of Cultural and Social Studies

By providing comprehensive research and educational programs on the human cultural activities and the relationship among human, society, technology, and nature, the School aims to encourage outstanding researchers who can compete internationally and can offer broad perspectives as well as those who can contribute to the society by using advanced research techniques in which they were trained.

School of Cultural and Social Studies

The School of Cultural and Social Studies is the only humanities school at SOKENDAI.

The School is comprised of the following five departments affiliated with 4 research institutes: Department of Regional Studies and Department of Comparative Studies affiliated with National Museum of Ethnology, Department of Japanese Studies affiliated with International Research Center for Japanese Studies, Department of Japanese History affiliated with National Museum of Ethnology and Department of Japanese Literature affiliated with National Institute of Japanese Literature.

The School not only conducts study and research at each research institute, but also conducts collaborative activities as an entire school. The School is playing an important role of conducting cultural and social studies at SOKENDAI based on a wide variety of academic expertise, and is disseminating the study achievements through methods such as publishing the academic journal "SOKENDAI Review of Cultural and Social Studies", holding the interdisciplinary exchange program "SOKENDAI Cultural Forum" hosted by each institute in rotation, and implementing the special education program "Academic Resource Management Course".

In addition, the School only accepts students for the second term of a doctoral course (Doctor) while the other schools at SOKENDAI adopt a five-year system accepting students for the first term of a doctoral course (Master).



Department of Regional Studies

The Department, affiliated with the National Museum of Ethnology, Japan, offers opportunities to study individual societies and cultures in Asia, Europe, Africa, the Americas and Oceania. Students will develop high expertise based on intensive fieldwork. The structure, history and other characteristics of each society and culture are explored using ethnographic methodologies. Practical and theoretical problems in local areas are investigated. New approaches in anthropology and related disciplines are encouraged.



Developing research skills through fieldwork with the Hmong people in Sa Pa, Vietnam (Photo IMAI Akitoshi)

Departments under the School

- Department of Regional Studies
- Department of Comparative Studies
- Department of Japanese Studies
- Department of Japanese History
- Department of Japanese Literature



■ Yamashita, Noriko
Dean
School of Cultural and Social Studies

Special field: Japanese early-modern literature, preforming arts, ukiyo-e



Seminar utilizing museum collections. Students have direct access to about 340,000 artifacts.

COURSES

Asian Studies
European Studies
African Studies
American Studies
Oceania Studies

For inquiries or information:

E-mail: souken@idc.minpaku.ac.jp

Department of Comparative Studies

The Department, affiliated with the National Museum of Ethnology, Japan, offers opportunities for comparative studies of social systems, religion, technology, languages, art, and cultural resources. Students are expected to explore similarities and differences in time and space and to explore new directions in the study of society and culture. The Department has the advantage of access to extensive collections of artifacts, audio-visual records, and documentary materials. The Department nurtures researchers who can develop new research areas by combining anthropological methods with the methods and findings of related fields.



Exhibition hall at the museum. A favorable educational environment for developing new research directions.



A Kazakh community event in Mongolia (Photo YAGI Fuki)
Our study abroad program provides access to diverse field places.

COURSES

- Social/Cultural Anthropology**
- Anthropology of Religion**
- Anthropology of Technology**
- Linguistics**
- Anthropology of Art**
- Cultural Resources**

For inquiries or information:
E-mail: souken@idc.minpaku.ac.jp

Department of Japanese Studies

The Department of Japanese Studies is organized as a single administrative unit in order to facilitate the international and interdisciplinary pursuit of Japanese studies encompassing the humanities, social sciences, as well as natural sciences. A special feature of our graduate study program is that all the faculty participate in teaching and research guidance. The department requires graduate students to take three courses—"Theory and Methodology in Japanese Studies," "Interdisciplinary Research," and "Dissertation Writing Guidance"—which set forth the theoretical and methodological basis for conducting Japanese studies in global perspective. Through these courses and directed research, we hope to foster researchers with creative and highly specialized perspectives who are equipped to undertake comprehensive approaches of a broad interdisciplinary nature crossing the lines of multiple fields of study.



Library
We acquire basic books and periodicals published both in and outside of Japan.

COURSES

- Japanese Studies**

For inquiries or information:
E-mail: senkou@nichibun.ac.jp

Department of Japanese History

In the Department of Japanese History, which has the National Museum of Japanese History as its parent institute, researchers specializing in history, archaeology, folklore, and allied disciplines including natural science, provide educational and research opportunities, including fieldwork, from interdisciplinary viewpoints. The most distinctive feature of the Department is that the students can use materials that are stored in the Museum, as well as various tangible and intangible information resources and advanced equipment for scientific analysis. The Department aims to foster researchers who are highly capable of comprehensive material-based analysis of Japanese history and culture and individuals who contribute to society with their broad and international perspectives.

Website:

http://www.rekihaku.ac.jp/english/education_research/education/graduate_school/index.html



Lecture utilizing museum collection

About 230,000 of historical, folkloric and archaeological artifacts as well as advanced research facilities can be made of.

COURSES

Japanese History

Studies of Historical Materials / Studies of Source Materials and Research on Exhibits / Analytical and Information Sciences /
Social History / Technological and Environmental History / Regional Cultures
Basic Seminar I • II / Intensive Lectures A • B • C

For inquiries or information:

E-mail: soken@ml.rekihaku.ac.jp

Department of Japanese Literature

The Department of Japanese Literature is affiliated with the National Institute of Japanese Literature (NIJL) as the parent institute. The NIJL, one of the Inter-University Research Institutes, is an advanced research institute for Japanese literature and collects and studies an enormous volume of academic information based on research of original literary materials. The Department guides students to become independent researchers through dissertation/thesis guidance and, in the use of the collection of original texts and literary resources at the NIJL, provides students with an education focusing on mastering of specialized research and investigation techniques and the acquisition of comprehensive analytic ability.

The Department aims to nurture researchers who are international-minded with broad perspectives and contribute to societies by providing students with education through systematic curriculums under a system which provides guidance to students from a group of faculty members, as well as from individual faculty members.



Library

COURSES

Department of Japanese Literature

General subjects / Literary resource research / Research on the formation of literature / Research on literary environments

For inquiries or information:

E-mail: edu-ml1@nijl.ac.jp

School of Physical Sciences

Aiming to nurture world-class researchers with broad perspectives as well as individuals with advanced knowledge and skills who will contribute to society in the field of material-, space-, and energy-related physics and chemistry.

School of Physical Sciences

The School of Physical Sciences conducts education and research in physical sciences relating to material, space, energy, and life. The five departments that constitute the School have been located at four Inter-University Research Institutes: the Institute for Molecular Science, the National Astronomical Observatory of Japan, the National Institute for Fusion Science, and the Institute for Space and Astronautical Science. These Institutes house special and large equipment impossible for general universities to accommodate, and they have implemented a great number of large-scale and internationally advanced research projects. The School is open to many foreign researchers, including visiting faculty members, postdoctoral fellows, and students, and thus offers a highly international environment. In this excellent research environment, students experience the frontiers of physical science and devote themselves to study and research, striving to create the science of the future by themselves. The School provides a tutoring system in which at least two faculty members are assigned per student, allowing practical research with one-on-one guidance. In addition, a research assistant (RA) system has generously supported students financially and created an environment in which they can concentrate on their study and research. We hope that many motivated students will enroll in the School and grow into researchers who will play major roles in the future of physical science.



Department of Structural Molecular Science

Education and research are primarily concerned with a systematic unveiling of the static as well as dynamic properties of materials through real images of molecules and molecular assemblies deduced from detailed structural analyses. Advanced training and research are conducted in the field of structural molecular science with the use of new methods for detecting and analyzing dynamic structures, in addition to a variety of traditional spectroscopic and theoretical techniques for structural analysis.



Material properties studied by x-ray photoelectron spectroscopy Analysis of electronic Structures and properties of air-sensitive matters using x-ray photoelectron spectrometer

Departments under the School

- Department of Structural Molecular Science
- Department of Functional Molecular Science
- Department of Astronomical Science
- Department of Fusion Science
- Department of Space and Astronautical Science



■ Ishikawa, Takehiko
Dean
School of Physical Sciences
Special field: Physical Science
using microgravity

COURSES

Electronic Structure Material Chemistry

For inquiries or information:
E-mail: r7139@orion.ac.jp

Department of Functional Molecular Science

Education and research are primarily directed towards, firstly, unveiling the underlying mechanisms of various functions of materials at the atomic or molecular level, and secondly, the design and generation of new functional properties of molecules and molecular assemblies. Advanced training and research are conducted in the field of functional molecular science with an emphasis on the development of modern techniques for functional analysis and novel theoretical approaches.



Synthesis of novel organic compounds
Chemistry of buckybowl molecules sumanene

COURSES

Molecular Dynamics Excited State Dynamics

For inquiries or information:
E-mail: r7139@orion.ac.jp

Department of Astronomical Science

The Department carries out advanced education and research through a wide range of observational and theoretical researches using state-of-the-art facilities like Subaru Telescope in Hawaii, the ALMA radio telescope in Chile, and supercomputers. According to the interest, students can learn the observational and theoretical astronomies and application of cutting-edge technology as well as the design, fabrication, and testing of new observational instruments, development of new methods of data acquisition and analysis, and public outreach.



Subaru Telescope is located on the summit of Mauna Kea, a dormant volcano on the Big Island of Hawaii.

COURSES

Optical and Near Infrared Astronomy

Ground-based astronomy / Optical and infrared telescope system / Planets / Sun, stars and interstellar matter / Galaxies and cosmology

Radio Astronomy

Ground-based astronomy / Radio telescope system / Sun, stars and interstellar matter / Galaxies

General Astronomy and Astrophysics

High-precision astronomical measurement / Astronomy from space / Data analysis and numerical simulation / Earth and planets / Sun, stars and interstellar matter / Galaxies and cosmology

For inquiries or information:
E-mail: daigakuin@nao.ac.jp

Department of Fusion Science

To develop fusion power for a future energy source, it is necessary to research plasma physics through a complementary approach of both experimental and theoretical studies.

In this department, students learn the experimental methodology as well as engineering requirements for investigating high temperature plasma, and also learn computer simulation techniques for revealing the nature of complicated fusion plasmas.



Large Helical Device (LHD)

COURSES

Fusion System

Device system / Research operation / Plasma heating / Diagnostics

Fusion Simulation

Plasma simulation / Particle simulation / Magneto hydrodynamic simulation

For inquiries or information:

E-mail: daigakuin@nifs.ac.jp

Department of Space and Astronautical Science

The Department of Space and Astronautical Science provides an opportunity for high-level education and advanced research through the theoretical study, the analysis of acquired data, and the practice of advanced R&D in Astrophysics, Solar System Sciences and Space Engineering. The main feature of each major is as follows.

- **Astrophysics** is to elucidate the origin, structure and evolution of the universe based on the observations from space.
- **Solar System Sciences** is to understand the origin and evolution of a variety of environments, including the prebiotic materials, by examining the present status and samples of past days.
- **Space Engineering** is to lead the future space development by providing innovative space technology. New space technology enables challenging missions in the above two scientific activities.

In addition, it is expected to cultivate not only depth of knowledge in Space Science but also the planning skills for space projects by touching on the most advanced and complex space projects.



Asteroid explorer "Hayabusa2"

The spacecraft is touching down to a newly created crater.

©Akihiro Ikeshita

COURSES

Space Exploration Science and Engineering

Space System / Space Exploration / Space Environment Science

Space Observation Science

Space Astronomy / Solar System Exploration

Space Technology

Electronic Device and telecommunication / Space Transportation Technology

For inquiries or information:

E-mail: sokendai@ml.jaxa.jp

School of High Energy Accelerator Science

The School of High Energy Accelerator Science provides opportunities for graduate students to carry out experimental and theoretical research on elementary particles and on materials structure and functions. The School also encourages them to engage in the research and development of novel and high performance accelerators. In addition, the School aims to foster the creative researchers who will push the frontiers of science and contribute to the good of society.

School of High Energy Accelerator Science

The School of High Energy Accelerator Science consists of three departments: the Department of Accelerator Science, the Department of Materials Structure Science, and the Department of Particle and Nuclear Physics. These departments are affiliated with the Accelerator Laboratory (and the Applied Research Laboratory), the Institute of Materials Structure Science, and the Institute of Particle and Nuclear Studies in the High Energy Accelerator Research Organization (KEK).

In the Department of Particle and Nuclear Physics, accelerator based high energy physics experiments through international collaborative projects as well as advanced theoretical research are performed in order to study and understand the origin of the cosmos and the ultimate structure of matter. In the Department of Materials Structure Science, structures of hard to soft materials and their functions are studied not only from a fundamental interest but also from an application point of view. KEK develops and operates high-energy accelerators which provide various particle beams such as protons, electrons, positrons, neutrinos, X-rays, neutrons, and muons. In the Department of Accelerator Science, principles and components of the accelerator complexes are studied. The education programs are based on variety of research activities pursued by KEK, which provide wide range of graduate education for students.



Department of Accelerator Science

High-energy particle accelerators are extremely powerful tools for exploring a wide range of building blocks and structures found in nature, from elementary particles and atomic nuclei to atoms, molecules, and even complex living organisms. In addition, beyond the field of natural science, applications of particle accelerators are being actively pursued in the fields of industry and medical science.

In the Department of Accelerator Science, students can conduct both theoretical and experimental research on the principles of accelerators and their related leading edge technologies, and thereby endeavor to further advance natural science through the development of particle accelerators.

Closely related subjects, such as radiation science, computer science, superconductivity engineering, and mechanical engineering can also be studied.



Accelerator Test Facility

Departments under the School

- Department of Accelerator Science
- Department of Materials Structure Science
- Department of Particle and Nuclear Physics



■ Ogawa, Yujiro

Dean

School of High Energy
Accelerator Science

Special field: Accelerator Science

COURSES

Accelerator Science

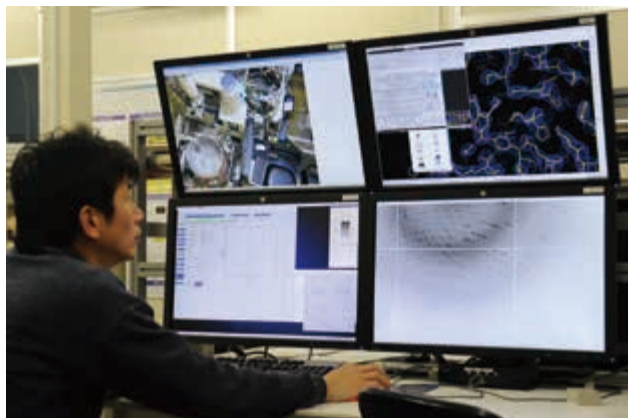
Beam physics / Beam Development / Design of Accelerator Projects / Accelerator Technology / Science of Magnetism / Science of Radio-Frequency Acceleration / Vacuum Science and Technologies / Computer Science / Radiation Science / Mechanical Engineering for Accelerator Development

For inquiries or information:

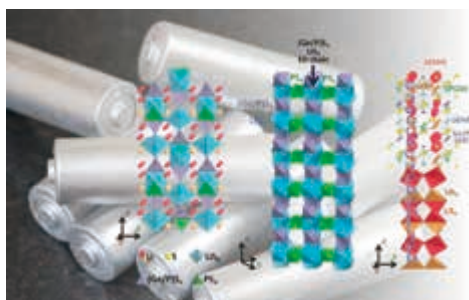
E-mail: kyodo2@mail.kek.jp

Department of Materials Structure Science

At the Institute of Materials Structure Science, we pursue leading edge researches on structures, functions and characteristics of hard to soft materials. The research studies concerning physics, chemistry, biology, engineering, agriculture, and medical science are performed by the use of advanced beams such as synchrotron radiation, neutrons, muons, and slow positron, which are provided by state-of-the-art particle accelerators. We are also developing novel technologies for beam production and its utilization to make major contributions to materials science.



View of a protein crystallography end-station



The crystal structure of the world-best lithium-ion-conducting material $\text{Li}_{10}\text{GeP}_2\text{S}_{12}$ was determined by neutron diffraction and synchrotron radiation. (Left to right) the crystal structure of $\text{Li}_{10}\text{GeP}_2\text{S}_{12}$, its framework, the conduction paths of lithium ions are shown. Zigzag conduction pathways along the c axis are indicated.

COURSES

Materials Structure Science
 Synchrotron Radiation Science /
 Materials Structure
 Science based on Synchrotron Radiation /
 Neutron and Muon Science

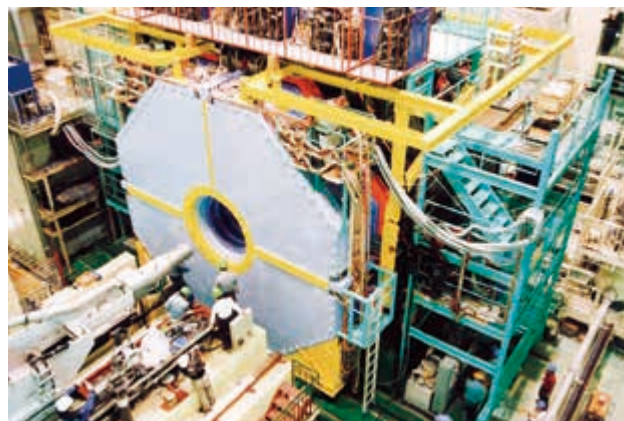
For inquiries or information:

E-mail: kyodo2@mail.kek.jp

Department of Particle and Nuclear Physics

Both particle physics and nuclear physics are among the most fundamental areas of basic science, and they are the sources of new frontiers in physical concepts and methods that are the basis of modern science; these subjects involve the pursuit of the most fundamental principles of nature and the exploration of the basic structure and building blocks of matter.

In this department, we conduct both theoretical and experimental researches in particle and nuclear physics. The theoretical investigations include not only those in particle and nuclear physics but also those in cosmology and astrophysics. The experimental investigations are conducted by means of colliding beam accelerators and various beams from high-intensity proton accelerators. In addition, related research in physics, including the R&D of new devices, methods, and their applications, is pursued in a versatile manner.



Upgrade of the SuperKEKB accelerator and Belle II detector. ©KEK

COURSES Theoretical Particle and Nuclear Physics

Fundamental Theories of Particle Physics / Particle Physics Phenomenology / Lattice Gauge Theory / Hadron and Nuclear Theory / Theoretical Cosmophysics

COURSES Experimental Particle and Nuclear Physics

B Factory / Hadron Collider Energy Frontier / Lepton Collider Energy Frontier / Neutrino Physics / Kaon Rare Decay / Muon Rare Process / Muon Precision Measurement / Nuclear Physics / Physics of Short-Lived Nuclei / Neutron Fundamental Physics / Experimental Cosmophysics / Beam Dynamics / Superconductivity and Cryogenic Engineering / Particle Detection Technology

For inquiries or information:

E-mail: kyodo2@mail.kek.jp

School of Multidisciplinary Sciences

The School of Multidisciplinary Sciences conducts research and education on important issues relating to changes of the Earth, environment, and human society. The School strives to cultivate researchers and highly specialized professionals in the area of information and system sciences, who will play key roles in research and/or development skills that will contribute to solving these issues.

School of Multidisciplinary Sciences

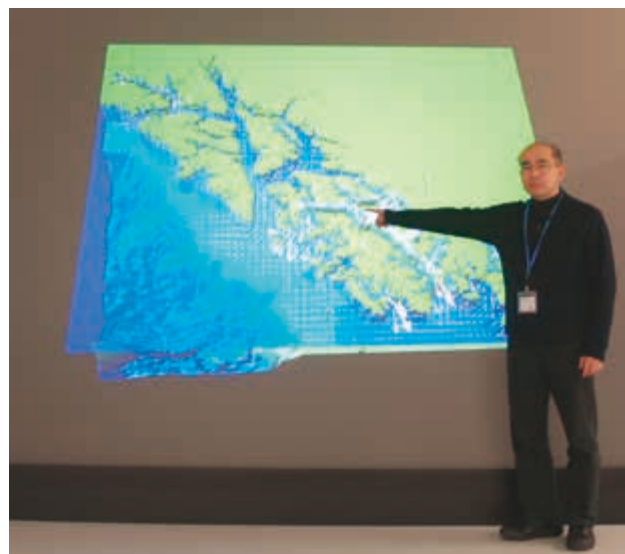
The School of Multidisciplinary Science conducts research and education on complicated natural and social phenomena, as systems that govern the occurrences, functions, and interactions of these phenomena, from the comprehensive and transdisciplinary viewpoint. Through such research and educational activities, the School aims to nurture researchers and highly specialized professionals in the area of information and systems who will take the lead in academic research and address various important issues relating to changes in human society in the 21st Century. The School, consisting of the Department of Statistical Science, the Department of Polar Science, and the Department of Informatics, has been involved in multidisciplinary research fields from the beginning. In addition, the School further strives to enhance its research and education by promoting close collaboration between the Departments by, for example, setting common subjects in curricula.

The School covers diverse research subjects but studies the principles of multidisciplinary science, research approaches, and methodologies as an essential part of the School's research and education activities. The Department of Statistical Science and the Department of Informatics seek to determine the common probability or complexity among various phenomena by statistical mathematics and data analysis. The Department of Polar Science studies the geophysical and the biological complex system in the polar regions of extremes on Earth and approaches its subject from the viewpoint of multidisciplinary science. By continuing to explore new research fields, including advanced and leading research fields, and systematizing them through such activities, the School strives for further development of the multidisciplinary sciences.



Department of Statistical Science

Statistical science researches statistical models and methods for rational inference, effective prediction and discovery of new knowledge based on the effective use of data in the face of complex and uncertain phenomenon and information explosion. The Department of Statistical Science, which is based on the Institute of Statistical Mathematics (ISM) serving as its underlying platform, intends to cultivate individuals who possess creative research and educational skills and contribute to solving various important intricately-intertwined issues through extraction of information and knowledge from the real world taking advantage of their skills in modeling, prediction, inference, and collection of data, while conducting research and education on their foundations, i.e., mathematics, computation, and applications.



Visualization System

Departments under the School

- Department of Statistical Science
- Department of Polar Science
- Department of Informatics



■ Imura, Satoshi
Dean
School of Multidisciplinary Sciences
Special field: Ecology

COURSES

Statistical Science

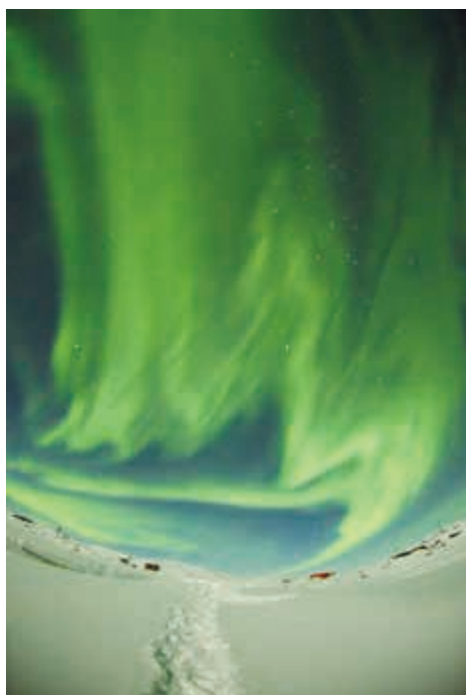
Statistical Modeling / Data Science / Mathematical Analysis and Statistical Inference

For inquiries or information:

E-mail: kenkyo@ism.ac.jp

Department of Polar Science

The Earth is the only one aqua-planet in the Solar system. Many kinds of organism including mankind have been living on it. When we long for sustainable development on this planet, we have to better understand evolution and change of its environments. Recently, we come to realize that environmental change of the Earth, in each aspect of ionosphere, atmosphere, hydrosphere, geosphere and biosphere, appears in advance from both polar regions. The objectives of Department of Polar Science are to study characteristics of the changes and their relation in the framework of the seamless Earth system. Polar Science stands strongly on the fieldwork; therefore we attach importance to educate or study together practical methodology to carry out the research. We train "Earth scientists" who are creative and flexible in studying the past, current and future figure of the Earth.



The aurora australis (Photo by Hidehiko Suzuki)

COURSES

Polar Science

Polar Space and Upper Atmospheric Sciences / Polar Meteorology and Glaciology / Polar Geoscience / Polar Bioscience

For inquiries or information:

E-mail: kyokuiki@npr.ac.jp

Department of Informatics

Informatics is a new science field which deals with many problems on information extensively and synthetically. It is a multidisciplinary science which covers traditional information science and engineering, as well as humanity informatics and social informatics. It includes expression, collection, circulation, management, processing and usage of information as well as the information technology (IT) for supporting them.

The Department of Informatics aims to foster researchers and highly skilled professionals with ability in broad range from foundations to practices and advanced speciality by utilizing cutting-edge research environment and cyber science infrastructure of the National Institute of Informatics in an international atmosphere with many researchers and students from various countries.



A spoken dialogue system with the NII character "BIT" based on machine learning frameworks of speech synthesis, speech recognition and dialogue management. (Assoc.Prof.YAMAGISHI Junichi)

COURSES

Informatics

Foundations of Informatics / Information Infrastructure Science / Software Science / Multimedia Information Science / Intelligent Systems Science / Information Environment Science

For inquiries or information:

E-mail: daigakuin@nii.ac.jp

School of Life Science

The School of Life Science aims to cultivate researchers who are internationally competitive and possess broad perspectives necessary for taking on leading roles in the life science research of the next generation. Students participate in research to clarify life phenomena at various levels from the molecular to the individual to the population.

School of Life Science

The School of Life Science aims to educate researchers who are internationally extraordinary and possess creativeness and broad perspectives to explore new fields of Life Science. Professors in this school cover wide fields of Life Science from the molecular to organismal and population levels.

The School of Life Science offers graduate programs that are aimed at nurturing independent and creative researchers that expand the frontiers of life science. Three departments that constitute the School of Life Science are based on three leading research institutions — National Institute of Genetics, National Institute for Basic Biology, and National Institute for Physiological Science. Research activities of these institutes cover variable fields of Life Science and the School of Life Science aims to provide research environments in which students can learn interdisciplinary concepts as well as their own specialty. Housing the largest number of life science faculty in Japan, the School of Life Science offers a mentoring system by multiple faculty, and provides a superb environment for independent research by each student. The graduate course provides not only lectures by outstanding internal professors but also seminars on the latest research progress conducted by external researchers, educational programs for cross-disciplinary approaches, and courses on scientific writing and presentation. The three departments hold a joint retreat every year for scientific interactions and share lectures over the internet for further enhanced interactions. We welcome students who love and enjoy Life Science, and dream to open new windows into the field.



Department of Genetics

The Department of Genetics offers education and research opportunities in a variety of cutting-edge disciplines with the goal of investigating biological phenomena on the basis of genetic information. Study and research fields include molecular, cellular, developmental, behavioral, population, and evolutionary genetics, as well as genome biology and bioinformatics. Students can take advantage of a wide range of databases and genetic resources hosted by the National Institute of Genetics. To nurture independent researchers, the Department of Genetics adopts an educational philosophy that the academic guidance of each individual student is carried out by the entire faculty. For example, graduate students meet with their thesis committee twice a year to receive advice from faculty members outside their host labs. Other features of the Department include the Scientific Presentation/Writing Program and ample financial assistance opportunities such as our research assistant program.



The rich environment of the Department of Genetics allows students to fully devote themselves to their own research projects.



Lively discussions are often held in the laboratories.

COURSES

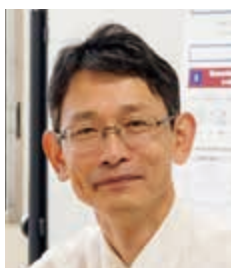
- Molecular and Cellular Biology**
- Developmental Biology**
- Evolutionary Biology**
- Genome Biology**

For inquiries or information:

E-mail: info-soken@nig.ac.jp

Departments under the School

- Department of Genetics
- Department of Basic Biology
- Department of Physiological Sciences



Iwasato, Takuji
Dean
School of Life Science

Special field: Neuroscience,
Molecular biology

Department of Basic Biology

The Department of Basic Biology trains researchers capable of developing innovative approaches and creative ideas to understand higher order phenomena in biological science. Students take advantage of the environment and facilities of the National Institute for Basic Biology. Students conduct a PhD research project with taking a variety of advanced classes and advices from several professors with different specialities. Research fields in this department cover cell biology, developmental biology, environmental biology, neurobiology, symbiotic biology and evolutionary biology with appropriate model organisms and top-end techniques including molecular biology, bioimaging, mathematical science and omics.



Model organisms used at Department of Basic Biology

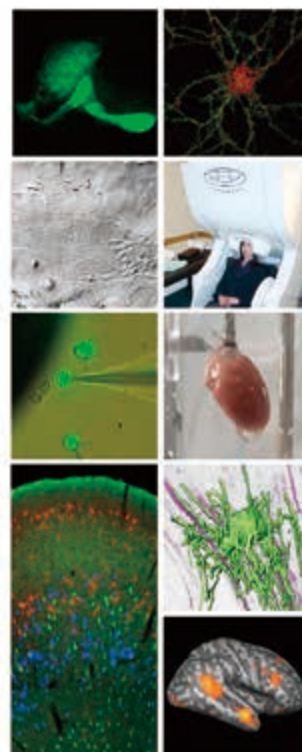
COURSES

Cell Biology
Developmental Biology
Environmental Biology
Neurobiology
Evolution, Diversity and Genomic Biology
Reproductive Biology

For inquiries or information:
 E-mail: r7139@orion.ac.jp

Department of Physiological Sciences

Physiology is to clarify the mechanisms of living bodies from both elements (cells and molecules) and systems, and therefore provides important basic knowledge necessary for understanding pathological conditions. Importance of physiology has been much increased upon clarification of genome structures. In this department, students can learn the function of intact organisms in an integrated way from molecular / cellular levels as basic units of living organisms to whole body levels, and are expected to be pioneering researchers in bioscience, neuroscience and medicine.



Cells, tissues and organs which researchers in Department of Physiological Sciences are working on using different experimental procedures

COURSES

Molecular and Cellular Physiology
Homeostatic Regulation
Fundamental Neuroscience
System Neuroscience

For inquiries or information:
 E-mail: r7139@orion.ac.jp

School of Advanced Sciences

Based on SOKENDAI's founding principles and purposes, the School aims to accomplish world-class academic research beyond the borders of conventional academic fields through interdisciplinary approaches. Additionally, we strive to develop transdisciplinary and advanced academic fields and to produce researchers who have broad perspectives and a high level of expertise that is globally competitive.

School of Advanced Sciences

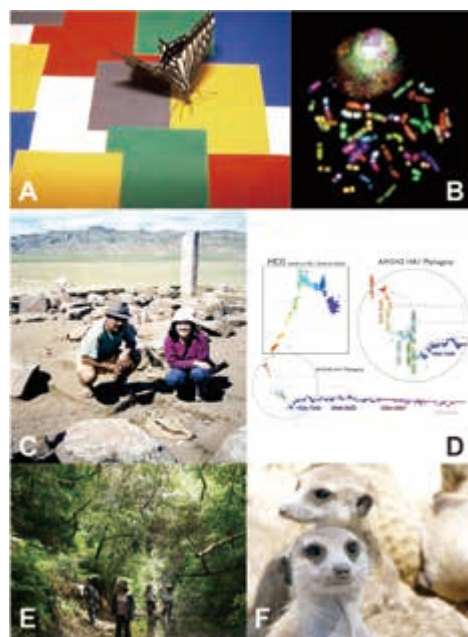
The School of Advanced Sciences is a school with just one department: the Department of Evolutionary Studies of Biosystems. Our mission is to perform research and education in the fields of evolution and science and society. The evolution section focuses on the diversity and evolutionary history of organisms, and consists of four subsections: integrative anthropology, behavioral biology, evolutionary biology and theoretical biology. The science and society section studies the roles and responsibilities of scientists within society, from the viewpoint that science is a social activity of humans. Students carry out Ph.D. research in their own field, but are also required to write a subthesis in the other one: biology students write a subthesis on science and society, and vice versa. The barriers between laboratories have been removed as far as possible, which makes for an intense, intimate educational environment for all students and faculty. We thus hope that all of our students will become competent and well-balanced researchers / professionals.

In addition, our school – together with the Center for Promotion of Integrated Sciences at Hayama – contributes to organizing courses for all of SOKENDAI. We also actively promote international and domestic collaborations with other universities and research institutes, to plant the seeds for fruitful future research fields.



Department of Evolutionary Studies of Biosystems

Since the origin of life 3.8 billion years ago, an extremely diverse collection of living organisms has populated the Earth. The concept of evolution is key to understanding the history and diversity of life, and also provides a theoretical framework linking the various levels of biology. Even human society can be viewed through the lens of evolution. Students will be trained to be world-class scientists in their own research field. At the same time, we offer courses covering not only a wide range of biological topics but also the relationship between science and society. This comprehensive training program aims to broaden our students' perspectives, in order that they will become professionals able to contribute to developing a sustainable global society in the future.



- A. A swallowtail butterfly feeding on nectar on the Mondrian pattern
- B. Chromosome images with the multicolor fluorescence *in situ* hybridization (FISH) method (crab-eating monkey ; $2n = 42$)
- C. Bones of horses excavated in Mongolian remains
- D. Forecasting evolution of influenza virus by using a mathematical model
- E. Field exercise at Morito River
- F. Meerkats form a family group and demonstrate various cooperative behaviors among related individuals.

Departments under the School

- Department of Evolutionary Studies of Biosystems



Sasaki, Akira
Dean
School of Advanced Sciences

Special field: Mathematical Biology

COURSES

Major in Biology

Anthropology / Evolutionary Biology / Behavioral Biology / Advanced Theoretical Biology

Major in Science and Society

Social Studies of Science

For inquiries or information:

E-mail: office_sendou@ml.soken.ac.jp

Interdepartmental Program

It is our general education policy that the SOKENDAI fosters young researchers who have a broad perspective, high-level expertise, logicity and technique. At the same time, the university offers interschool/departmental education programs that meet new academic wishes and development.

Comprehensive Subjects Program

◎ SOKENDAI Freshman Course

This program is an intensive retreat course offering an invaluable opportunity to interact with students and professors from different departments, with whom you have few chance to meet. It also aims at guiding students to a fulfilling experience, by delivering SOKENDAI's goals that indicates what all the students must acquire as a researcher.

■ **2016 fiscal year (First semester)** Date: April 4-7, 2016

■ **2016 fiscal year (Second semester)** Date: October 3-6, 2016



◎ “Science and Society” Program

SOKENDAI has been leading a program to develop graduate education in “science and society.” Since the university's primary mission is to train professionals who have leading expertise as well as broader perspectives, we hope our young scientists develop abilities to grasp science as part of social activities and to think critically about social dimensions of scientific practice including social implications and impacts of research activities and infrastructure supporting scientific research. Therefore the program designs and provides “science and society” course as well as workshops to discuss various issues pertinent to a specialized field of science. As part of the activities, we offer a 1.5-day program, “Researchers and Society,” within the Freshman Course twice a year (in Japanese and English).

SOKENDAI Brain Science Joint Program

Brain Science Joint Program was set up as a model case of the interdisciplinary education system initiated by Dept. Physiological Sciences and created a new curriculum for SOKENDAI students to learn extensive fields in Brain Science with the cooperation of other related Departments (Basic Biology, Genetics, Informatics, Statistical Science, Evolutionary Studies of Biosystems).

All lectures are being delivered by remote lecture system, which enables students to attend from the distant departments. We cordially expect your active participation from various backgrounds.

Integrative Bioscience Education Program

To foster the development of young researchers who can contribute to the future of biology, we need a new graduate program that promotes interdisciplinary and integrative views of biological processes, covering not only biological but also physical, mathematical, and information sciences. A new curriculum of Integrative Bioscience will thus be developed and implemented in this program, utilizing notable features of SOKENDAI: graduate school education at cutting-edge national research institutes in diverse fields.

Academic Resource Management Program

The academic resource management course is led by the School of Cultural and Social Studies and aims to develop researchers with a high capability in academic resource management through learning about advanced academic resource management such as methods for reading diverse academic resources, analysis using advanced scientific methods, recording and scientific preservation management of academic resource information, and research presentations using academic resources.

Course-by-Course Education Program to Cultivate Researchers in Physical Science with Broad Perspectives

The Program is provided jointly by the School of Physical Sciences and the School of High Energy Accelerator Science. It seeks to foster researchers in the field of physical sciences who are fully equipped with a high degree of professional qualities as well as broad perspective and international competence to meet the needs of society. In the 1st to 2nd years of the 5-year doctoral course, the Program focuses on building basic academic skills at the graduate school level. In the 3rd to 5th years of the 5-year doctoral course students are placed according to their aptitude into one of the following four courses: Basic Course, Advanced Research Course, Project Research Course (available only in the School of Physical Sciences), and Development Research Course (available only in the School of Physical Sciences).

Joint School Seminars

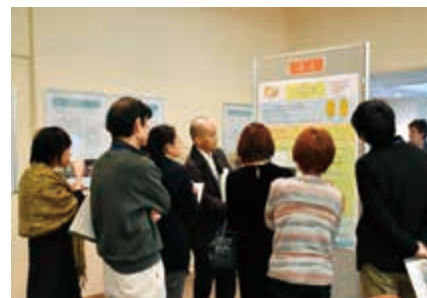
◇ SOKENDAI Cultural Forum / School of Cultural and Social Studies

December 10-11, 2016 at International Research Center for Japanese Studies

The forum is an event for academic exchanges organized by SOKENDAI's only liberal arts department, School of Cultural and Social Studies. Centering "culture" as a common focus, it offers a forum for interdisciplinary exchanges among faculties and students of various majors from inside and outside of the university.

As it provides a place to publish their research, the event functions as an educational opportunity for the students to present their research works and achievements and to learn presentation skills at the same time. Through these activities, the project also serves as a gateway for academic interactions between art and science students.

Furthermore, by involving students in the planning and organization of the event, students can exercise their planning skills and receive advices and supports from faculties on project management through the collaboration, which in turn would facilitate students' ability as independent researchers.



◇ Physical Science Student Seminar / School of Physical Sciences and School of High Energy Accelerator Science

January 12-13, 2017 at High Energy Accelerator Research Organization

School of Physical Sciences and School of High Energy Accelerator Science organize the multidisciplinary Physical Science Student Seminar as a part of their course curriculums. Every one-and-a-half years, students and faculties from eight majors join in this overnight event to hold academic seminars. The project authorizes students to take responsible roles in the planning and organization of the event in order to polish their planning and organizing skills and train them as highly competent researchers.

The project is also expected to offer a gateway for multidisciplinary collaborations.



◇ Multidisciplinary Sciences Cross Talks / School of Multidisciplinary Sciences and School of Life Science (Department of Genetics)

September 29-30, 2017 at Shizuoka Prefecture

At the "Young Researchers Cross Talks" hosted by Research Organization of Information and Systems and co-sponsored by School of Multidisciplinary Sciences, members of School of Multidisciplinary Sciences and Department of Genetics, as well as faculties and students from a variety of fields in SOKENDAI, join together to hold group discussions throughout this overnight event.

Through group discussions and presentations on multidisciplinary topics with the presence of local and international faculties and students from various fields of study, students are expected to acquire higher expertise, wider perspectives, and international competency.

◇ Life Science Retreat / School of Life Science & School of Advanced Sciences

October 24-25, 2017 at Shizuoka Prefecture

Life Science Retreat invites biology faculties and students for academic interactions, through which it aims to foster talents with a broader grasp of biological science and the capacity to contribute to the development of the field.

English is used throughout the conference to improve the participants' international caliber. Students plan and coordinate research presentations (oral and poster) and opinion exchanges. In the project, student organizers are expected to polish planning skills through the preparation and exercise presentations skills.



Internship Program

This program is designed to financially support students who wish to participate in international collaborative and field research activities in universities, institutes, or companies in Japan or abroad for their future career development. The underlying objective of the program is to foster researchers with high expertise and broad perspectives, and promote an understanding of cross-disciplinary cooperation and social relationships.

FY 2016

Number of students supported by this program: 9

Countries and regions of visiting institutes: USA, UK, Italy, Switzerland, Germany, China, France, Kobe (Japan)



The Center for the Promotion of Integrated Sciences

CPIS is a research and education facility at the heart of this multidisciplinary university, and its central aims are to promote free and open academic interactions across various academic disciplines and to pioneer interdisciplinary and cutting-edge fields of academic research.

The center's current programs focus on the following three aspects of research and education activities.

The details of each projects can be found on our web-site: <http://cpis.soken.ac.jp/>

The Programs for Multidisciplinary Coordination in Education

◎ Interdisciplinary Lectures for the 2016 fiscal year

The program aims to offer intensive courses in order to provide "education unique to SOKENDAI", including interdisciplinary themes leading to development of new academic areas and solutions of important relevant issues faced by modern society, and themes for lectures preferable to be attended by students across specialty areas, as well as to provide support for education programs to improve the learning of integrated science for students of SOKENDAI with wide-ranging vision across specialty areas.

Subject: Introduction to the ethics of animal
In charge: Tsukahara, Naoki (The Center for the Promotion of Integrated Science)
Date: July 23 - July 24, 2016
Venue: SOKENDAI Hayama Campus

Subject: Grand United Natural History I (Space and Earth)
In charge: Kamada, Susumu (The Center for the Promotion of Integrated Sciences)
Date: July 25, 2016 (Remote Lecture),
September 7 - September 9, 2016
Venue: KEK Tsukuba campus, JAXA Tsukuba campus,
Geological museum AIST

Subject: Science Communications
In charge: Kurata, Tomoko (Department of Basic Biology,
School of Life Science)
Date: August 8 - August 10, 2016
Venue: Nobeyama Radio Observatory, NAOJ

Subject: Advanced measurements and control systems for science
In charge: Matsuo, Hiroshi (Department of Astronomical Science, School of Physical Sciences)
Date: October 4 - October 7, 2016
Venue: Nobeyama Radio Observatory, NAOJ

Subject: Basic digital circuit design for measurement and control system development
In charge: Nakanishi, Hideya (Department of Fusion Science, School of Physical Sciences)
Date: October 26 - October 28, 2016
Venue: NIFS, Toki campus

Subject: Training course on symmetry and group theory - basic course
In charge: Kamiyama, Takashi (Department of Materials Structure Science, School of High Energy Accelerator Science)
Date: March 6 - March 10, 2017
Venue: KEK, Tsukuba campus

Grand United Natural History

In the fiscal year 2015, the study group was organized for the course development of "Grand United Natural History" and several workshops were held to discuss the basic concept of the course. In the fiscal year 2016, the intensive course "Grand United Natural History I (Space and Earth)" was opened as the experimental implementation of the course. The study group evaluated the results of the trial and now is working on preparation of the subsequent trial course "Grand United Natural History II (Life and Humanity)" for the next fiscal year 2017 as well as exploring the concept of "Life and Humanity".



◎ CPIS Student-Initiated Programs

The Center for the Promotion of Integrated Sciences (CPIS), under the SOKENDAI's education and research philosophy, invites proposals for the student-initiated programs that include interdisciplinary exchanges (of multiple schools/departments to plan and implement a program), research seminars, study workshops, and others. Through the student-initiated programs, we aim at training our students to gain a broad vision and to acquire practical problem-solving skills.

Theme: For The Acquisition of Research Funds
In charge: Seiko, Takashi (Department of Evolutionary Studies of Biosystems, School of Advanced Sciences)
Date: September 19, 2016
Venue: TKP conference center

The Programs for Multidisciplinary Coordination in Research

The Center for the Promotion of Integrated Sciences engages in various research support activities under its Programs for Multidisciplinary Coordination in Research in order to promote joint research projects that utilize SOKENDAI's unique characteristics, as well as creative research that falls outside conventional academic disciplines. There are currently three categories of support provided: 1) Promotion of cross-disciplinary joint research programs based on internal application, 2) Proposals for interdisciplinary research coordination (Promising Research Group support, etc.), and 3) Publication support for students. In concrete terms, the category of cross-disciplinary joint research programs provides three or two years of support, respectively, for research expenses related to "Global Collaborative Research Projects" and "Interdisciplinary Research Projects" with the goal of promoting creative, international scientific research that transcends conventional academic disciplines and of developing advanced academic fields that contribute to society in keeping with SOKENDAI's four guiding keywords: "cross-disciplinary cooperation," "societal collaboration," "institute collaboration" and "international collaboration." Research outcomes for topics selected for this program are presented at a public research presentation held annually on SOKENDAI's Hayama campus.

◎ The Global Collaborative Research Project

In this program, fostering comprehensive researchers who have a high level of expertise, wide perspective, and who are internationally viable, deepening the bond with graduates, and leading to strengthen the formation of SOKENDAI's academic exchange by having our university students and graduates participate in the cross-cutting research subjects in this program and collaborative researches opened at home and abroad are also the goals of this project. Contributing to the opportunity for diligent research in the international collaborative researches and research exchange for the students and young faculties of our university by having the researchers from overseas research institutes participate in the collaborative researches will be evaluated.

◎ The Interdisciplinary Research Project

We actively provide support for the proposal of the collaborative research aimed at promoting/strengthening the inter-infrastructural majors having different graduate courses and institutions, In this project, creating new academic disciplines, cooperating different field of collaborative research, and the research subject for which the outcome with social significance are expected.

◎ The Exploratory Research Workshop Support

In order to promote the early-stage research conducted by multiple researchers from various departments, CPIS supports the cost for holding exploratory research workshops. 4 workshops were supported in the fiscal year 2016.

◎ The Publication Support for Students

The publishing cost support of the printing expenses up to 200,000 yen per publication was carried out for about the academic paper which was a result of the research activities. This support is applicable only for the students who belong to SOKENDAI. Total 19 publications were supported in the fiscal year 2016.

The Programs for Infrastructural Development

◎ Promotion of Interdisciplinary Communication

To support inter-department research, education programs, and communication at SOKENDAI, we visit all the departments and prepare a report on each activity. In order to develop our university network, we use our official website, YouTube, and Facebook to share information about our interdisciplinary activities.

We provide the following information on our website:

1) Activity report about CPIS projects

Our website covers activity reports about interdisciplinary lectures, planning meetings of SOKENDAI research projects, student-initiated interdisciplinary educational programs, and other CPIS projects along with images.

2) Public relations for faculties and students using video contents

To inform faculty members and students about CPIS projects, we provide video content on interdisciplinary lectures, SOKENDAI research projects, student-initiated interdisciplinary educational programs, and other projects through YouTube.

3) Interactive bulletin board for researchers

This webpage is for researchers who have some idea about interdisciplinary research. Researchers can use the webpage to seek research partners.

4) CPIS blog

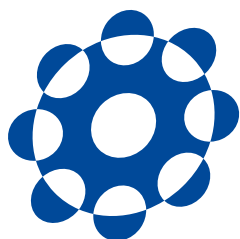
The CPIS blog promotes the interdisciplinary activities of faculties and students, interdisciplinary lectures, planning meetings of SOKENDAI research projects, student-initiated interdisciplinary educational programs, and other projects.

◎ Distance Learning Support

The Center for the Promotion of Integrated Sciences engages in activities to support distance learning for the entire university, including interdepartmental education programs.

In AY2016, CPIS engaged in activities to support education at SOKENDAI, such as providing support for the creation and distribution of synchronous and asynchronous course content.

In AY2017, CPIS will again engage in such educational support activities.



Symbol of SOKENDAI

The eight circles represent Chinese character “eight” that spreads out like an open fan, symbolizing SOKENDAI's continuous efforts to further the principles of its foundation. The connection of the circles indicates close connection and cooperation between SOKENDAI and its parent institutes (Inter-University Research Institutes). The circles also mean harmony. The inner halves of the peripheral circles facing the center circle represent the unity of the University; they convey that SOKENDAI provides advanced research and education in an integrated manner through the tradition and uniqueness of the parent institutes as well as the openness of the University in Japan and overseas.

The outer halves of the peripheral circles spreading outward represent the hope of creating and developing advanced scientific fields and nurturing creative researchers with broad perspectives.

The SOKENDAI logo is a registered trademark.

The Center for Academic Information Services

This Center was established to aims at effective management of academic information in SOKENDAI. Based on secure and resilient information infrastructure, it provides various academic information services to researchers and researchers-in-future who are both users and creators of academic information, and supports education, research, and administration in SOKENDAI.

Hayama Library (Attached Headquarters)

Hayama Library gathers, organizes and releases various academic materials to provide high-level research and education and to pioneer advanced academic fields.

Hayama Library is open around-the-clock to the faculty and students at the Hayama Campus for reading and borrowing. It collects and makes available standard references and books that can be used in all Departments and Schools, as well as specialized books and journals related to studies in cutting-edge and/or interdisciplinary research fields.

Image and video documentation materials are available through in-house facilities.

In addition, Hayama Library offers SOKENDAI Institutional Repository, which allows free online access to doctoral dissertations and book/journal publications at the University, as well as academic papers published by the faculty and students at the Hayama Campus. The Library also provides database services, including OPAC (Online Public Access Catalog) for books and journals held by the Library, the HRMS (High-Resolution Molecular Spectroscopy Database), a database of SOKENDAI faculty's education and research outcomes, the Sakyo Komatsu Corpus, the Jomon Shellmound Database, and the Fowl Collection.

These books and database are also available to general public. The venue effectively functions both as a place to collect research resources and a studying space.

SOKENDAI staffs and neighborhood residents can borrow books belonging to Kanagawa Prefectural Library (KL-NET Service). Furthermore, since 2015, it has been serving as a service counter of National Diet Library to enable users to browse digital materials belonging to the National Diet Library.

Number of academic materials available at the Library

Book :	(Japanese)	approx. 22,700 titles
	(Non-Japanese)	approx. 24,900 titles
Journal :	(Japanese)	approx. 140 titles
	(Non-Japanese)	approx. 320 titles
E-book :		approx. 56,000 titles
E-journal :		approx. 5,800 titles
Institutional Repository :		approx. 4,800 titles

As of April 1, 2017

Electronic Journals

BioOne / JSTOR / Science Direct / Springer-LINK / Wiley-Blackwell / GeoScienceWorld

Scopus (Document/reference database search service)

※In addition to the above, electronic journals for internal use at the Hayama Campus are available.

<http://www.lib.soken.ac.jp>

Database for Sakyo Komatsu Corpus

Database for the bibliography of Sakyo Komatsu's works.

Database for the Jomon Shellmound

Database for the sites from which the faunal sediments are excavated.

Database for the Fowl Collection

Database for the folk crafts etc of which the motif are the Fowls.

University Library

The University Library consists of the Hayama Library and IURI libraries. The University Library gathers, organizes, and accumulates electronic materials. Under close cooperation with the Hayama Library and IURI libraries, the University Library aims to promote the education / research activities by performing required activities for facilitation of the use of academic information. It offers a large number of e-journals and e-books so that faculty and students of IURIs dotted around the country can use these materials in common. In addition, the university introduces and offers the world's largest bibliographic / citation database "Scopus".

For inquiries or information : University Library

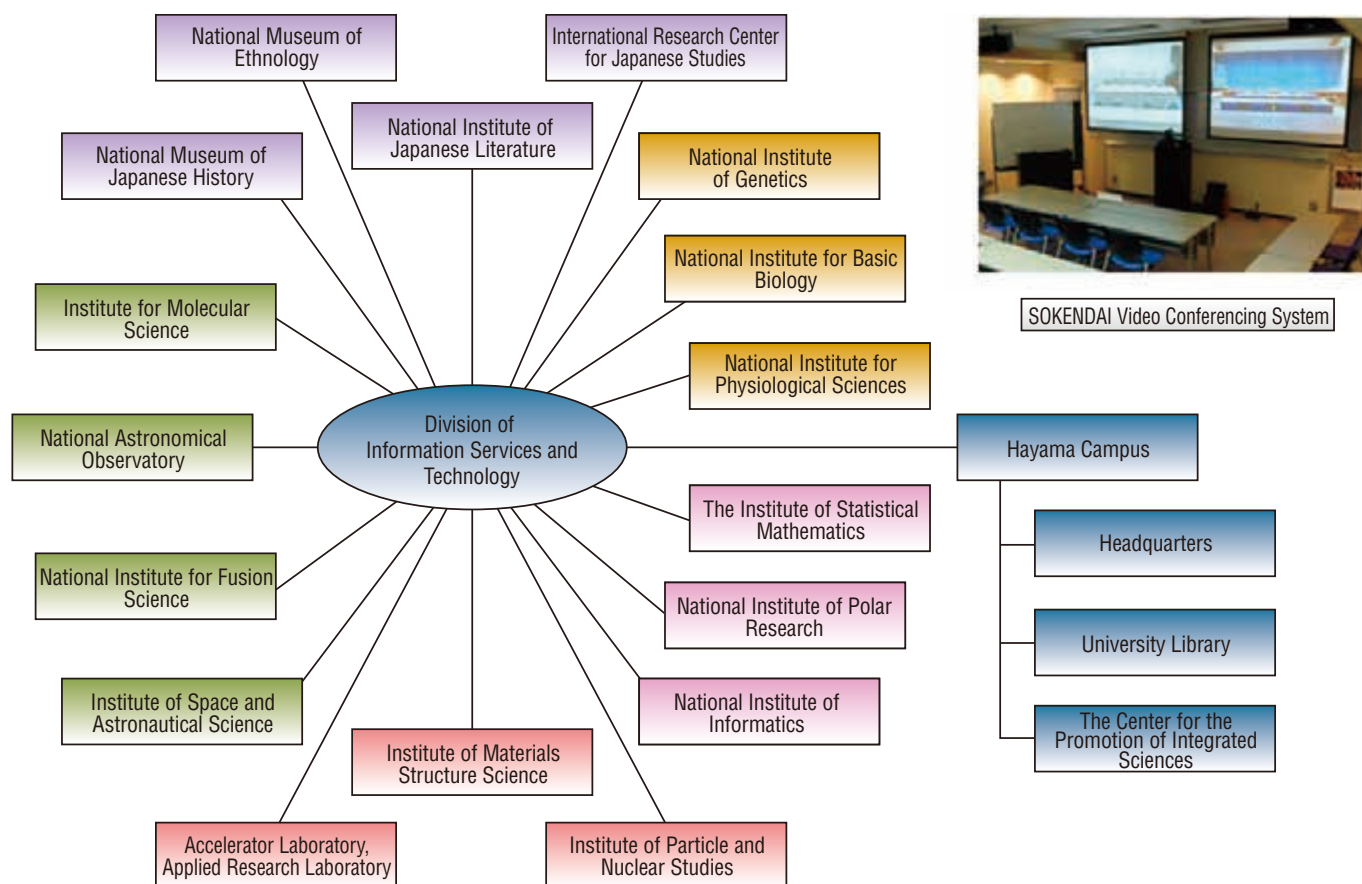
TEL : 81-46-858-1528

FAX : 81-46-858-1607

E-mail : lib@ml.soken.ac.jp

Division of Information Services and Technology

Cooperating with the affiliated research institutes and museums, this division manages core information facilities and operates information systems located at the Yokohama Data Center and the Hayama Campus.



SOKENDAI Video Conferencing System

The system connects the affiliated Inter-University Research Institutes and JAXA with the university headquarters. It facilitates teleconferencing and supports university activities.

Tele-learning Assistant System at SOKENDAI

The system promotes inter-departmental activities and supports education and research with broad and deep perspectives.

SOKENDAI Cloud Computing System

This private cloud computing system is a basic facility lately developed to promote intra-university education, academic exchange, and public relations.

For inquiries or information : Academic Information Service Office

TEL : 81-46-858-1587
FAX : 81-46-858-1633
E-mail : istc.jimu@ml.soken.ac.jp



Monument "COSMOS" A work by Kyu SUZUKI

With its important theme of "Life", the monument is a sculpture reminiscent of the natural world including sprouts of plant and ear of rabbit making your imagination expand infinitely when you touch it, and the title "COSMOS" has both meanings of space and name of a flower.

Office of Promotion for International and Social Affairs

Office of Promotion for International and Social Affairs was established as the organization for the purpose of promoting international and social cooperation of this university in FY2015.

International Cooperation Office

◎ Short-Stay Study Abroad Program

This program is supported by a grant from the University that enables students to take part in international joint research projects.

It provides students opportunities to study at cutting-edge research institutes abroad and to pursue in-depth study with a number of prominent researchers.

It aims at fostering highly specialized world-class researchers who have global perspectives.

Students are able to gauge the positioning of their own research and forge friendships and make exchanges with new colleagues.



FY2016

Number of students supported by this program: 10

Countries and regions of visiting institutes: USA, China, Germany, Switzerland, Ireland

◎ Program to Coordinate Education and Research

This program is part of SOKENDAI's efforts to promote internationalization. It seeks to strengthen organizational coordination with foreign research institutions and universities and help build SOKENDAI's international network by supporting SOKENDAI faculty engaged in field studies and joint research activities that strengthen coordination in education with foreign universities, research institutions, and the like.

FY 2016

Number of faculty sent: 6

Faculty destinations: USA, India, South Korea, Switzerland, Canada, Singapore

◎ Program to Invite Foreign Students and Researchers/Scholars

This program supports activities that heighten the international competency of SOKENDAI's educational and research environment and help to strengthen the international network for graduates who will work overseas by inviting foreign students and researchers/scholars to Japan to participate in joint research and joint seminars.

FY 2016

Number of activities: 12

◎ Support Program for International Research Conferences

This program is part of SOKENDAI's efforts to promote internationalization. It seeks to encourage international academic exchange and help strengthen awareness of SOKENDAI as a strong promoter of international collaboration by partially subsidizing domestic and foreign international research conferences (international symposiums, international forums, international seminars, etc.) that meet certain criteria.

FY 2016

Number of events: 11

◎ UST-SOKENDAI Joint Seminar

This joint seminar organized by SOKENDAI and University of Science and Technology(UST) promotes an interaction of research by participation of both University students. UST in Korea and SOKENDAI has a similar research and education system affiliated with national research institutes. Based on evaluation of seminars held twice in the past, we discussed how to achieve broader educational interaction in the last fiscal year.

JSPS Summer Program

The objective of this program is to inject an international element into the education at the University and to promote academic exchange with other countries. SOKENDAI provides an orientation session during the first week of the program at the Hayama campus. It comprises Japanese language lessons, special lectures on Japanese culture and research, and a poster session in which SOKENDAI students will also participate to exchange ideas and opinions with JSPS Summer Program fellows from all over the world. Under the program young pre- and post-doctoral researchers from academically-advanced countries are invited to the University with the collaboration of inter-university research institutes and other universities. This program, which is supported by JSPS, provides guest researchers with an opportunity to experience Japanese research and education.

Opening Ceremony and Orientation

Date: June 15-21, 2016

Venues: SOKENDAI Hayama Campus, Shonan Village Center

Research Report Presentation and Farewell Party

Date: August 23, 2016

Venues: Hotel Grand Palace (Tokyo)

Research Experience at Host Institutions

Date: June 22-August 22, 2016

Venues: IURIs, Universities

Invited researchers for the 2011 fiscal year		Invited researchers for the 2012 fiscal year		Invited researchers for the 2013 fiscal year		Invited researchers for the 2014 fiscal year		Invited researchers for the 2015 fiscal year		Invited researchers for the 2016 fiscal year	
U S A	64	U S A	64	U S A	65	U S A	66	U S A	65	U S A	65
U K	9	U K	12	U K	17	U K	13	U K	10	U K	10
France	11	France	10	France	9	France	13	France	13	France	13
Germany	9	Germany	14	Germany	19	Germany	13	Germany	12	Germany	12
Canada	6	Canada	9	Canada	3	Canada	0	Canada	10	Canada	10
						Sweden	10	Sweden	5	Sweden	5
T o t a l	99	T o t a l	109	T o t a l	113	T o t a l	115	T o t a l	115	T o t a l	115



English Presentation Skills

Lectures for the purpose of obtaining practical abilities to internationally appeal attractiveness of research are held targeting the students of this university in conjunction with the orientation of the JSPS Summer Program. Students participate in a group discussion and a poster session held in the orientation, and practice the introduction of their research in English, after receiving guidance from English teachers.

Public Relations Office

The Public Relations Office serves as a liaison that handles public relations for SOKENDAI. To promote and develop science and to disseminate excellent research results to the public, the Office communicates to the public the outcomes of education and research activities at SOKENDAI. Its public relations activities include press releases on education and research outcomes and activities toward local communities, media relations, online information disclosure, organization of Science Cafes and public lectures and publication of SOKENDAI New Letters.

Press Release

Research findings in FY 2016 published on the following six papers are press released and subsequently appeared in newspapers and various media:

- ◇ Molecular logic behind the three-way stochastic choices that expand butterfly colour vision
- ◇ A partial nuclear genome of the Jomons who lived 3,000 years ago in Fukushima

A group led by professor Naruya Saitou of Department of Genetics and Dr. Hideaki Kanzawa (now researcher at National Museum of Nature and Science), who was supervised by him and awarded Ph.D. from SOKENDAI in 2014, have extracted DNA from dental pulp of Jomon people excavated from Sangani shell mound located at north part of Fukushima Prefecture, and succeeded in decoding a part of the nuclear genome. This time, 115 million base pairs of DNA sequences of the genome have been determined which contain thousands times more information of mitochondria DNA. It has been proved that Jomon people were most closely related to Ainu, followed by Okinawan and the mainland Japanese. In addition, it has been also shown that Jomon people branched off earlier than any other people when ancestors of the modern people migrated from Africa to East Eurasia and that percentage of Jomon people genome succeeded to modern mainland Japanese was estimated to be less than 20 %.

A press release was held to disclose the research outcomes and they were taken up by various media.



- ◇ Acropora digitifera encodes the largest known family of fluorescent proteins that has persisted during the evolution of Acropora species
- ◇ A Lin28 homolog reprograms differentiated cells to stem cells in the moss Physcomitrella patens
- ◇ The pitcher plant Cephalotus genome reveals genetic changes associated with carnivory
- ◇ Historical space weather monitoring of prolonged aurora activities in Japan and in China

Community Programs

With the aims of making the accumulated research findings of the University broadly available to the public, opening up the University to the public, and deepening exchanges with the local community, we proudly participate in the "Shonan Village Festival" in Shonan Village, which is home to the Hayama Campus. In addition, we also sponsor Science Cafes in Zushi city.

◇ Shonan Village Festival

- Lecture: "The Past, Present and Future of Aurora and Human Society: Citizen Participation-based Research"
- Kataoka, Ryuho (Associate Professor at the Department of Polar Science)
- Science Café: "Communicating Science"
- Stargazing Session: "Enjoying the Spring Night Sky"
- Date: May 3, 2016

◇ Science Seminar for Junior High and High School Students

- Second Opportunities for Primary School Students in Bangladesh
- Uchikawa, Sayaka (Assistant Professor at the Center for the Promotion of Integrated Sciences)
- Date: July 27, 2016

◇ Science Café

- "Investigating Arctic Weather and Sea Ice"
- Inoue, Jun (Associate Professor at the Department of Polar Science)
- Date: February 12, 2017

◇ "Yokoko Academia" organized by Kanagawa Prefectural Yokosuka High School

We supported the academic program, "Yokoko Academia" organized by Kanagawa Prefectural Yokosuka High School to contribute to local educational institutes and foster future generations. Last year, we sent our seven lecturers to the "Academia" at seven seminars. The school was designated as a Super Science High School by the Ministry of Education, Culture, Sports, Science and Technology last year.



For inquiries or information: Public Relations Office

TEL : 81-46-858-1590 FAX : 81-46-858-1632

E-mail : kouhou1@ml.soken.ac.jp

Society and Community Outreach Activities

Academic Lectures hosted by the School of Advanced Sciences

From various on-going studies, the School selects themes relating to “light and evolution” and organizes academic lectures that deliver findings from cutting edge research to the general public and help to create deeper communication with people in the local communities.

■ The 19th Academic lecture for FY 2016

Lectures: Can psychopathy be branded as "evil"? - Seeking adaptive functions of psychopathy from the Evolutionary psychology perspective

Yokota, Kunihiro (Research Fellowship in School of Advanced Sciences)

Lectures: Did Jomon people cultivate beans? - Pottery impressions revealed new insights of Jomon plant use

Nasu, Hiroo (Assistant Professor at the Department of Evolutionary Studies of Biosystems)

Date: November 3, 2016

For inquiries or information : Hayama Office

TEL : 81-46-858-1577, 1595

FAX : 81-46-858-1544

E-mail : office_sendou@ml.soken.ac.jp



SOKENDAI Alumni Network

We have organized “SOKENDAI Alumni Network” in which our alumni enjoy academic exchange with SOKENDAI faculty and students towards closer inter-disciplinary and international cooperation among SOKENDAI community and all the members jointly contribute to further development of SOKENDAI education and research activities through their enthusiastic collaborations.

For inquiries or information: Anet Office

E-mail: soken-anet@ml.soken.ac.jp

University Evaluation

With the aim of improving education and research, SOKENDAI has implemented a self-inspection and evaluation system for its educational and research activities. In addition, third parties assess the results of the self-inspection and evaluation to identify problems to be solved or improved.

- “External evaluation of the School of Advanced Sciences” (November, 2004 / January, 2013)
- “Third-party evaluation on the Office for Inter-departmental Activities” (March, 2007)
- “Certified Evaluation and Accreditation” (March, 2008 / March, 2014) SOKENDAI was evaluated by the National institution for Academic Degrees and University Evaluation, NIAD-UE, according to its University Evaluation Standards. SOKENDAI was accredited with the rating that it fulfills the University Evaluation Standards set by NIAD-UE.
- “National University Corporation Evaluation (Annual plan and mid-term plan)”

For inquiries or information: Planning Section

TEL: 81-46-858-1584

FAX: 81-46-858-1542

E-mail: irdiv@ml.soken.ac.jp

SOKENDAI Newsletter

Our monthly SOKENDAI Newsletter covers ongoing activity information at the university such as various events in our campuses, research findings released to media, and awards.

You can find it online on our university website. (Japanese Only)

<https://www.soken.ac.jp/disclosure/pr/publicity/newsletter/>



Our Nobel Prize Laureates

Professor Emeritus, School of Life Science



The 2016 Nobel Prize in Physiology or Medicine for his discoveries of mechanisms for autophagy

1996.10-2009.3 Professor, School of Life Science
2008.4-2009.3 Dean, School of Life Science
2006 Japan Academy Prize
2016 Order of Culture

Yoshinori Ohsumi
Professor Emeritus,
SOKENDAI /
National Institute for
Basic Biology

Professor Emeritus, School of High Energy Accelerator Science



The 2008 Nobel Prize in Physics for the discovery of the origin of the broken symmetry which predicts the existence of at least three families of quarks in nature

1999.4-2004.3 Professor, School of Mathematical and Physical Science
2004.4-2006.3 Professor, School of High Energy Accelerator Science
2003.4-2004.4 Chair, Department of Particle and Nuclear Physics
2008 Order of Culture

Makoto Kobayashi
Professor Emeritus,
SOKENDAI /
Honorary Professor
Emeritus, High Energy
Accelerator Research
Organization(KEK)

The list of professors who received famous prizes or held an honorable positions in international academic society

Name	Prize/Achievement	Research Theme
Ohta, Tomoko (Professor Emeritus, Department of Genetics)	Order of Culture (2016) The Crafoord Prize (2015)	Nearly Neutral Theory
Suematsu, Yasuharu (Professor Emeritus, Department of Informatics)	Order of Culture (2015)	Optical Communication Engineering
Innan, Hideki (Associate Professor, Department of Evolutionary Studies of Biosystems)	Japan Academy Medal (2014)	Theoretical Elucidation of the Mechanisms of Evolution with Genomic Sequence Data
Nakanishi, Susumu (Professor Emeritus, Department of Japanese Studies)	Order of Culture (2013)	Japanese Literature
Iye, Masanori (Professor Emeritus, Department of Astronomical Science)	Japan Academy Prize (2013)	Observational Studies of the Early Universe
Yamanaka, Yuriko (Associate Professor, Department of Regional Studies)	Japan Academy Medal (2011)	A Comparative Study of Alexander the Great's Images in the Medieval Middle East
Hayami, Akira (Professor Emeritus, Department of Japanese Studies)	Order of Culture (2009)	Socio-Economic History, Historical Demography
Morokuma, Keiji (Professor Emeritus, Department of Structural Molecular Science)	Imperial Prize and Japan Academy Prize (2008)	Theoretical Studies of Design of Structure, Function and Reactivity of Molecules
Kaifu, Norio (Professor Emeritus, Department of Astronomical Science)	President, International Astronomical Union (2012-2015)	
Motojima, Osamu (Professor Emeritus, Department of Fusion Science)	Emeritus Director-General of ITER International Fusion Energy Organization (2010)	

The list of alumni who received JSPS Ikushi Prize

Name	Prize	Research Theme
Kitamura, Daichi (Department of Informatics)	JSPS Ikushi Prize (2016)	Multichannel blind music source separation based on nonnegative matrix factor source model
Mochizuki, Kenji (Department of Functional Molecular Science)	JSPS Ikushi Prize (2013)	Theoretical Study on the Molecular Mechanism of Ice Melting and the Local Structure of Aqueous Solution
Nakahata, Yoshihisa (Department of Physiological Sciences)	JSPS Ikushi Prize (2013)	Activation-Dependent Spatial Dynamics of Postsynaptic Glycine Receptors

SOKENDAI Scientist Award

The purpose of SOKENDAI Scientist Award is to commend the research achievements obtained by the scientists who obtained Doctor's degree from SOKENDAI.

The 3rd (FY2016) Award Ceremony: April 11, 2017

Dr. Araki, Mitsunori

Graduated at Department of Structural Molecular Science, School of Mathematical and Physical Science in 1999

Project Research Fellow / Assistant Professor, Tokyo University of Science

Special field: Space Radio Spectroscopy, Identification of Interstellar Molecules

The 2nd (FY2015) Award Ceremony: April 4, 2016

Dr. Shimamura, Ippei

Graduated at Department of Regional Studies, School of Cultural and Social Studies in 2004

Associate Professor, The University of Shiga Prefecture

Special field: Cultural Anthropology, Shaman in Mongolia

The 1st (FY2014) Award Ceremony: April 6, 2015

Dr. Nakamura, Shin

Graduated at Department of Accelerator Science, School of Mathematical and Physical Science in 2001

Professor, Chuo University (Faculty of Science and Engineering)

Special field: Theoretical Physics, Superstring Theory

Nagakura Research Incentive Award

Funded by SOKENDAI's first President, Dr. Nagakura Saburo, the SOKENDAI Nagakura Research Incentive Award started in 1995 to encourage SOKENDAI's outstanding students to pursue further research and to develop new research fields.

The 21th (FY2015) Award Ceremony: September 28, 2016

Name	Department	Research Theme
Huang, Yu	Japanese Literature	Chinese classics acceptance and the translation, succession of Tsurezuregusa
Takeda, Kohei	Evolutionary Studies of Biosystems	Ritualized signals in the red-crowned crane: how and why do they perform various displays?

The 20th (FY2014) Award Ceremony: March 24, 2015

Name	Department	Research Theme
Kataoka, Akimasa	Astronomical Science	Planetesimal Formation via Fluffy Dust Aggregates
Tabuchi, Sawako	Physiological Sciences	A new mouse model for the study of narcolepsy

The 19th (FY2013) Award Ceremony: March 20, 2014

Name	Department	Research Theme
Mochizuki, Kenji	Functional Molecular Science	A Theoretical Study on the Dynamical Mechanism of Ice Melting
Ohkawa, Toshika	Physiological Sciences	Global profiling of synaptic autoantibodies reveals a mode of action of anti-LGI1 autoantibodies in limbic encephalitis

The 18th (FY2012) Award Ceremony: March 22, 2013

Name	Department	Research Theme
Morikuni, Keiichi	Informatics	Inner-iteration preconditioning for large-scale ill-conditioned least squares problems
Honda, Masazumi	Particle and Nuclear Physics	Numerical "experiment" of Superstring/M-theory

The 17th (FY2011) Award Ceremony: March 23, 2012

Name	Department	Research Theme
Oba, Chikage	Regional Studies	"How people without a writing tradition preserve and construct their history? An analysis of the oral chronicle among the Boorana in Southern Ethiopia."

SOKENDAI Future Scientist Award

The purpose of SOKENDAI Future Scientist Award is to encourage originative research proposed or planned on his/her own initiative by SOKENDAI students who aspire to be researchers.

The 3rd (FY2016) Award Ceremony: April 11, 2017

Name	Department	Research Theme
Kawashima, Takayuki	Statistical Science	Robust and sparse regression modeling with application to big data
Iizuka, Tomoyo	Genetics	Genome-wide survey of orthologous genes in Agaricomycetes indicates possible involvement of spc33 in the parallel evolution of the septal pore cap
Kato, Takahiro	Evolutionary Studies of Biosystems	"Biased secondary sex ratio in tree sparrows <i>Passer montanus</i> : Causes and consequences of sex-specific embryo mortality"

The 2nd (FY2015) Award Ceremony: April 4, 2016

Name	Department	Research Theme
Onishi, Kyoko	Astronomical Science	"Observational study towards black-hole mass : resolving the coevolution process of black hole and galaxy"
Tanoue, Yuta	Statistical Science	"Analysis and Prediction on Bankloan credit risk"

The 1st (FY2014) Award Ceremony: April 6, 2015

Name	Department	Research Theme
Huang, Yu	Japanese Literature	Chinese classics acceptance and the translation of Tsurezuregusa - for the creation of originality in literature
Shimakawa, Rizumu	Astronomical Science	Environmental effects on galaxy formation: When and how did spiral and elliptical galaxies diverge?
Nakazawa, Shingo	Genetics	To elucidate activity-dependent mechanisms of neuronal circuit development in neonatal mouse barrel cortex

Academic Staff

(As of May 1, 2017)

Category	Member of the Board	Professor	Associate Professor	Lecture	Assistant Professor	Others	Secretariat	Total
President	1							1
Executive Director	2							2
Auditor	2							2
Vice President	(1)							(1)
Presidential Aide						1		1
School of Cultural and Social Studies	Regional Studies	10	13					23
	Comparative Studies	11	12					23
	Japanese Studies	19	4					23
	Japanese History	19	14					33
	Japanese Literature	8	14					22
	Subtotal	0	67	57	0	0	0	124
School of Physical Sciences	Structural Molecular Science	7	7		20			34
	Functional Molecular Science	10	7		21			38
	Astronomical Science	23	37	(1)	49			109(1)
	Fusion Science	25	19		18			62
	Space and Astronautical Science	15	41		20			76
	Subtotal	0	80	111	(1)	128	0	319(1)
School of High Energy Accelerator Science	Accelerator Science	55	57	17	55			184
	Materials Structure Science	20	23	6	15			64
	Particle and Nuclear Physics	34	33	30	20			117
	Subtotal	0	109	113	53	90	0	365
School of Multidisciplinary Sciences	Statistical Science	18	18		10			46
	Polar Science	10	26		19			55
	Informatics	27	32		12			71
	Subtotal	0	55	76	0	41	0	172
School of Life Science	Genetics	25	8		36			69
	Basic Biology	15	15		36			66
	Physiological Sciences	15(1)	16		37			68(1)
	Subtotal	0	55(1)	39	0	109	0	203(1)
School of Advanced Sciences	Evolutionary Studies of Biosystems	4(1)	6	4	6	4		24(1)
	Subtotal	0	4(1)	6	4	6	4	24(1)
The Center for the Promotion of Integrated Sciences		(1)	2(2)	(2)	4(1)			6(6)
The Center for Academic Information Services		(1)	(1)	(1)	1	1		2(3)
Secretariat etc.					1			43
Total		5(2)	370(4)	404(3)	59(3)	379(1)	5	1264(13)

※ The number of staff in parentheses indicates those who concurrently work in other section [not included in the total].

Students

(As of May 1, 2017)

School	Department	Quota		1st year		2nd year		3rd year		4th year		5th year		Total							
		Doctoral Course		Female	Int'l Students	Female	Int'l Students	Female	Int'l Students	Female	Int'l Students	Female	Int'l Students	Female	Int'l Student						
		5-year	3-year																		
School of Cultural and Social Studies	Regional Studies		3					3	1	2	0	0	8	3	5	11	4	7			
	Comparative Studies		3					1	0	1	3	1	2	13	9	3	17	10	6		
	Japanese Studies		3					3	2	2	4	3	2	13	8	2	20	13	6		
	Japanese History		3					2	0	0	1	0	0	7	3	1	10	3	1		
	Japanese Literature		3					2	0	0	1	1	0	3	3	0	6	4	0		
	Subtotal		15						11	3	5	9	5	4	44	26	11	64	34	20	
School of Physical Sciences	Structural Molecular Science	2	3	4	1	0	5	2	0	2	1	0	5	0	2	8	4	5	24	8	7
	Functional Molecular Science	2	3	6	3	1	4	1	0	5	0	3	1	1	1	0	0	17	5	5	
	Astronomical Science	2	3	4	0	0	5	0	0	7	3	1	2	1	0	11	2	3	29	6	4
	Fusion Science	2	3	2	1	0	3	0	0	5	1	3	4	0	2	4	0	3	18	2	8
	Space and Astronautical Science	2	3	3	1	1	3	0	0	4	0	0	7	2	2	6	1	0	23	4	3
	Subtotal	10	15	19	6	2	20	3	0	23	5	7	19	4	7	30	7	11	111	25	27
School of High Energy Accelerator Science	Accelerator Science	2	※ ²	2	0	1	4	0	2	8	1	4	3	1	1	4	1	2	21	3	10
	Materials Structure Science	3	※ ²	3	2	1	1	0	1	0	0	0	4	1	2	1	1	0	9	4	4
	Particle and Nuclear Physics	4	※ ²	5	0	0	9	1	1	11	1	1	7	2	2	10	0	0	42	4	4
	Subtotal	9	—	10	2	2	14	1	4	19	2	5	14	4	5	15	2	2	72	11	18
School of Multidisciplinary Sciences	Statistical Science	2	3	2	0	0	0	0	0	5	1	2	6	1	0	12	3	0	25	5	2
	Polar Science	2	1	3	1	0	1	0	0	5	1	0	3	0	0	8	5	0	20	7	0
	Informatics	4	6	7	2	4	3	0	3	16	0	9	12	2	10	27	3	11	65	7	37
	Subtotal	8	10	12	3	4	4	0	3	26	2	11	21	3	10	47	11	11	110	19	39
School of Life Science	Genetics	3	6	8	5	3	3	2	2	5	1	1	5	2	1	14	4	4	35	14	11
	Basic Biology	3	6	4	1	1	4	0	1	6	0	1	8	4	0	17	9	4	39	14	7
	Physiological Sciences	3	6	3	0	0	2	1	0	4	4	4	5	0	1	10	3	0	24	8	5
	Subtotal	9	18	15	6	4	9	3	3	15	5	6	18	6	2	41	16	8	98	36	23
School of Advanced Sciences	Evolutionary Studies of Biosystems	5	1	1	1	0	2	0	0	4	2	0	3	3	3	12	9	0	22	15	3
	Subtotal	5	1	1	1	0	2	0	0	4	2	0	3	3	3	12	9	0	22	15	3
	Total	41	59	57	18	12	49	7	10	98	19	34	84	25	31	189	71	43	477	140	130

※¹ The number of female students and international students is included in the total.

※² The School of High Energy Accelerator Science does not have a specific quota of admission but gives examinations.

Matriculation Admission of the 2017 fiscal year

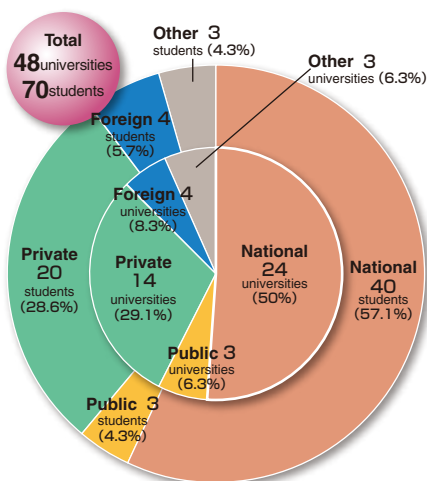
(As of April 1, 2017)

School	Department	Quota	Applicant	Passer	Admitted Students	Background			
						Gender		International Students	Jobholder
						Male	Female		
School of Cultural and Social Studies	Regional Studies	— (3)	(4)	(3)	(3)	(2)	(1)	(2)	
	Comparative Studies	— (3)	(3)	(1)	(1)	(1)		(1)	
	Japanese Studies	— (3)	(6)	(3)	(3)	(1)	(2)	(2)	
	Japanese History	— (3)	(5)	(2)	(2)	(2)			(1)
	Japanese Literature	— (3)	(4)	(2)	(2)	(2)			
	Subtotal	— (15)	(22)	(11)	(11)	(8)	(3)	(5)	(1)
School of Physical Sciences	Structural Molecular Science	2 (3)	6 (1)	6	4	3	1		
	Functional Molecular Science	2 (3)	8 (1)	6 (1)	5 (1)	3 (1)	2	(1)	
	Astronomical Science	2 (3)	24 (1)	7 (1)	4 (1)	4	(1)		
	Fusion Science	2 (3)	4	3	2	1	1		
	Space and Astronautical Science	2 (3)	10 (2)	3 (2)	2 (1)	1 (1)	1		
	Subtotal	10 (15)	52 (5)	25 (4)	17 (3)	12 (2)	5 (1)	(1)	
School of High Energy Accelerator Science	Accelerator Science	2 (若干名)	3 (2)	3 (2)	1 (2)	1 (2)			
	Materials Structure Science	3 (若干名)	4 (1)	3 (1)	2	1	1		
	Particle and Nuclear Physics	4 (若干名)	22	11	5	5			
	Subtotal	9	29 (3)	17 (3)	8 (2)	7 (2)	1		
School of Multidisciplinary Sciences	Statistical Science	2 (3)	4 (3)	3 (3)	1 (3)	1 (2)	(1)	(1)	(2)
	Polar Science	2 (1)	5	3	3	2	1		
	Informatics	4 (6)	6 (6)	3 (3)	2 (3)	2 (3)		(1)	1 (1)
	Subtotal	8 (10)	15 (9)	9 (6)	6 (6)	5 (5)	1 (1)	(2)	1 (3)
School of Life Science	Genetics	3 (6)	8 (1)	4	4	2	2		
	Basic Biology	3 (6)	4 (5)	4 (5)	3 (4)	2 (4)	1		
	Physiological Sciences	3 (6)	5	3	3	3			
	Subtotal	9 (18)	17 (6)	11 (5)	10 (4)	7 (4)	3		
School of Advanced Sciences	Evolutionary Studies of Biosystems	5 (1)	7 (3)	3 (2)	1 (2)		1 (2)		
	Subtotal	5 (1)	7 (3)	3 (2)	1 (2)		1 (2)		
Total		41 (59)	120 (48)	65 (31)	42 (28)	31 (21)	11 (7)	(8)	1 (4)

() 3-year Doctoral Course [not included in the total] .

※ A few people.

Admission of the 2017 fiscal year



Japanese National Universities

Hokkaido University	4
Hirosaki University	1
Tohoku University	1
University of Tsukuba	2
Chiba University	1
The University of Tokyo	4
Tokyo Gakugei University	2
Tokyo University of Agriculture and Technology	2
Niigata University	1
The University of Electro-Communications	1
Hitotsubashi University	1
Nagaoka University of Technology	1
Shinsyu University	1
The Graduate University for Advanced Studies	1
Nagoya University	5
Nagoya Institute of Technology	1
Kyoto University	2
Osaka University	1
Nara Women's University	1
Hiroshima University	2
Tokushima University	1
Kagawa University	1
Kochi University	1
Kyushu University	2

Japanese Public Universities

Tokyo Metropolitan University	1
TSURU University	1
Nagoya City University	1

Japanese Private Universities

Kanagawa University	1
Aoyama Gakuin University	1
Keio University	1
International Christian University	1
Shibaura Institute of Technology	1
Taisho University	1
Chuo University	1
Tokyo University of Agriculture	3
Tokyo University of Science	2
Nihon University	4
Japan Women's University	1
Waseda University	1
Ritsumeikan University	1
The Open University of Japan	1

Foreign Universities

Mahidol University	1
California State University	1
Vietnam National University-Ho Chi Minh City	1
University of Information Technology	1
Northeast Normal University	1

Others

National Institute of Technology, Asahikawa College	1
National Institute of Technology, Nara College	1
Osaka Prefecture University College of Technology	1

Degrees Awarded

School	Quota	Field	For the period of 1991~2011	'12	'13	'14	'15	'16	Total
School of Cultural and Social Studies	(15)	Literature	86 [19] (36)	7 [2] (4)	3 (1)	5 [4] (2)	5 [4] (1)	5 [1] (3)	111 [30] (47)
		Philosophy	55 [8] (21)	3 [1] (4)	4 [1] (4)	6 [2] (2)	4	3 [2]	75 [14] (31)
School of Physical Sciences	10(15)	Philosophy	55 [0] (11)	3	0	0	1	2 [1]	61 [1] (11)
		Science	323 [11] (32)	13 [2]	19	11 (3)	10 [3]	22 [1]	398 [17] (35)
		Engineering	55 [1] (15)	6	7 [1]	4 [2] (1)	3	3 (1)	78 [4] (17)
School of High Energy Accelerator Science	9(※)	Philosophy	22 [0] (8)	1 [1]	0 (1)	0	0	2	25 [1] (9)
		Science	127 [3] (12)	12 (1)	5	8	9	2	163 [3] (13)
		Engineering	40 [0] (21)	3	1	3	1 (2)	2 [1]	50 [1] (23)
School of Multidisciplinary Sciences	8(10)	Statistical Science	21 [1] (2)	1 (1)	1	4 [1]	4	5	36 [2] (3)
		Philosophy	69 [4] (10)	4	5	2	1	2 [1]	83 [5] (10)
		Science	48 [0] (6)	2	2	2	2	3	59 [0] (6)
		Informatics	76 [4] (0)	10 [1]	9 [1]	10 [1]	14 [2]	22 [4]	141 [13] (0)
School of Life Science	9(18)	Philosophy	34 [1] (2)	0	1	0	1	0	36 [1] (2)
		Science	450 [22] (35)	21 [1]	18 [2] (1)	23 [2] (1)	18 [1] (1)	20 [2] (1)	550 [30] (39)
		Medical Science	8 [0] (0)	0	1	0	1	0	10 [0] (0)
School of Advanced Sciences	5(1)	Philosophy	15 [5] (0)	0 (1)	0	0	0	0	15 [5] (1)
		Science	42 [6] (2)	3 [1]	2	1	4	0	52 [7] (2)
		Engineering	5 [1] (0)	0	0	0	0	0	5 [1] (0)
Total	41(59)		1531 [86] (213)	89 [9] (11)	78 [5] (7)	79 [12] (9)	78 [10] (4)	93 [13] (5)	1948 [135] (249)

※1 The quota of admission is the one in FY 2016. (The figures in parentheses is the quota of 3-year doctoral course. The School of High Energy Accelerator Science does not have a specific quota of admission but accepts only a few students.)

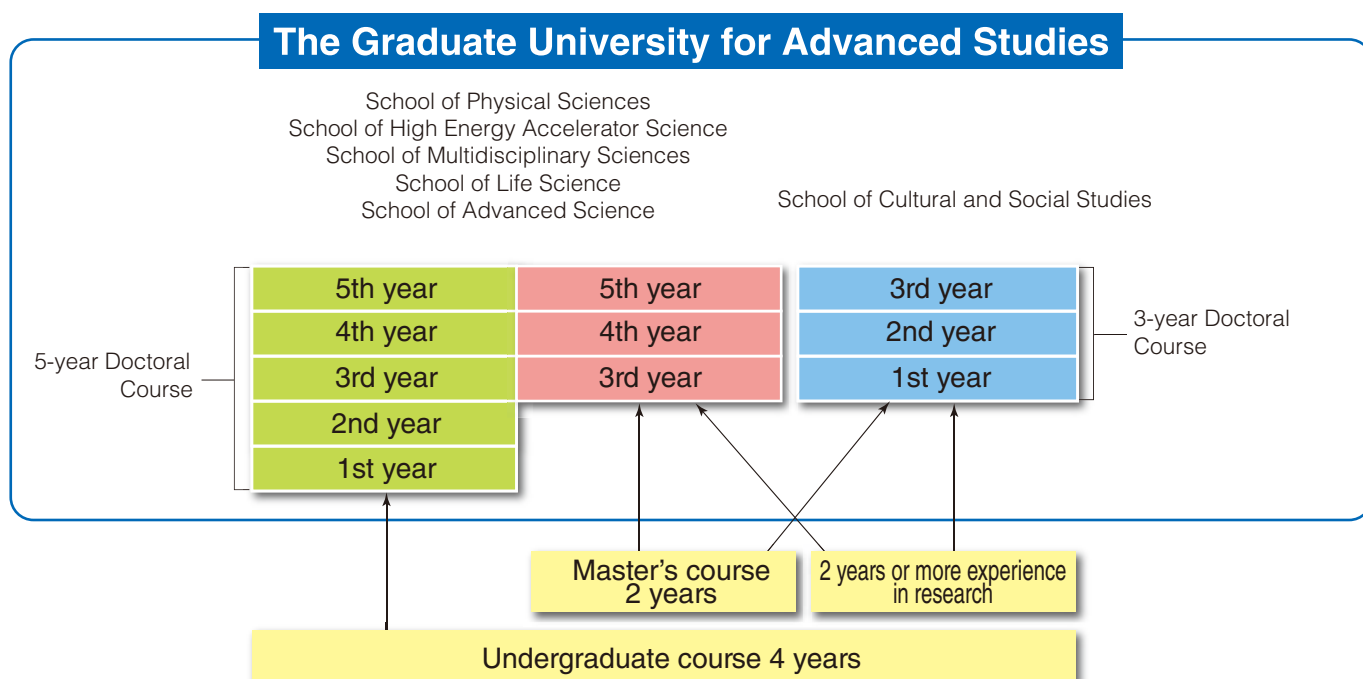
※2 (): Figures of those who were granted the Ph.D. by way of Dissertation (not included in the total).

※3 [] : Figures of those who were granted the Ph.D. within a specified time after leaving the university.

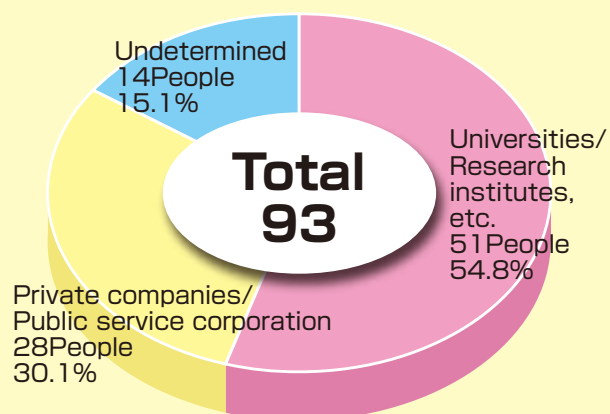
※4 The School of Physical Sciences, the School of High Energy Accelerator Science, and the School of Multidisciplinary Sciences were formed from the former School of Mathematical and Physical Science on March 31, 2004.

Requirements for completion of the Ph.D. course

Students are required to be enrolled in SOKENDAI for more than 3 years (five-year course students are required to be enrolled for more than 5 years), earn necessary credits prescribed at each department, take necessary research guidance for a doctoral thesis, and pass an examination for a doctoral thesis. Students who are recognized to have achieved great performance, can graduate in shorter term.



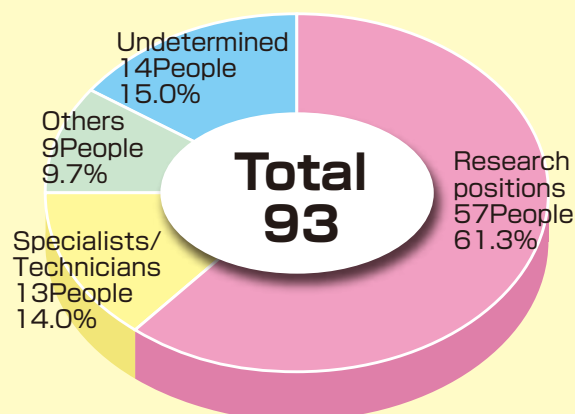
Postgraduate Career Tracking / Profile of the 2016 fiscal year



Type of Industry

Universities/Research institutes,etc

The National Museum of Ethnology
 Institute for Molecular Science
 National Institute for Fusion Science
 National Astronomical Observatory of Japan
 Institute of Space and Astronautical Science
 High Energy Accelerator Research Organization, Institute of Materials Structure Science
 Institute of Statistical Mathematics
 National Institute of Informatics
 National Institute of Genetics
 National Institute for Basic Biology
 National Institute for Physiological Sciences
 National Institutes of Natural Sciences, Okazaki Institute for Integrative Bioscience
 The University of Aizu
 Aomori Chuo Gakuin University
 Ehime University
 Osaka Ohtani University
 Kwansei Gakuin University
 Keio University
 The University of Tokyo
 Japan Advanced Institute of Science and Technology
 Ritsumeikan University
 Waseda University
 The University of Tokyo, Atmosphere and Ocean Research Institute
 University of Toyama, Center for Far Eastern Studies
 Begum Rokeya University, Rangpur
 Columbia University
 Hue University of Sciences
 National University of Singapore
 University of California, Santa Cruz
 University of Science, Vietnam National University of Ho Chi Minh City
 Vidyasirimedhi Institute of Science and Technology
 Hubei University of Chinese Medicine
 Institute of Organic Chemistry and Biochemistry of the Czech Academy of Science
 Institute of Plasma Physics, Chinese Academy of Sciences
 Southwestern Institute of Physics



Type of Occupation

Research positions: University faculty, Faculty of Inter-University Research Institute, Researchers at Private Research Institute, Postdoctoral researcher, etc.
 Others: Clerical staffs, Service industry workers, Teachers, etc

Private companies/Public service corporation.....

Asahi Kasei Analysis & Simulation Center
 TOYAMA Co.,Ltd.
 NARD Institute,ltd.
 FAST Co.,Ltd
 FiNC inc.
 Honda Motor Co., Ltd
 CANON ELECTRONICS INC.
 CMIC Co., Ltd.
 Shin-Nakamura Chemical Co.,Ltd
 Ernst & Young ShinNihon LLC
 Sony Corporation
 TAKARA BIO INC.
 TechFirm Inc.
 Tokyo Electric Power Company Holdings, Inc.
 Nikken Total Sourcing Inc.
 NISSIN ELECTRONICS CO.,LTD.
 NIFTY Corporation
 Virtualex Consulting,inc BEANCUBE, INC.
 Global Energy Interconnection Development and Cooperation Organization
 SAP Japan Co., Ltd.
 Ibaraki college National Institute of Technology
 KAICHI GAKUEN
 TOCHIGI PREFECTURE
 Japan Health a Medical Technical College
 Ministry of Defense

International Exchange

Number of International Students by Department

(As of May 1, 2017)

School	Department	Quota		1st year		2nd year		3rd year (1st year**)		4th year (2nd year**)		5th year (3rd year**)		Subtotal			Research Student							
		Doctoral Course		*1	*2	*1	*2	*1	*2	*1	*2	*1	*2	*1	*2	*1	*2	*1	*2					
		5-year	3-year																					
School of Cultural and Social Studies	Regional Studies		3						2	1			5	3		7	4	0						
	Comparative Studies		3						1			2	1	2	3	2	1	6	3	3	2	1		
	Japanese Studies		3						2	2		2	2		2	1		6	5	0	1	1	1	
	Japanese History		3											1			1	0	0					
	Japanese Literature		3														0	0	0					
	Subtotal	0	15	0	0	0	0	0	5	3	0	4	3	2	11	6	1	20	12	3	3	2	2	
School of Physical Sciences	Structural Molecular Science	2	3								2		1	5	3		7	3	1					
	Functional Molecular Science	2	3	1	1	1			3		1	1					5	2	2					
	Astronomical Science	2	3						1	1	1			3			4	1	1					
	Fusion Science	2	3						3	1	2	2		2	3		3	8	1	7				
	Space and Astronautical Science	2	3	1		1						2		2			3	0	3	1		1		
	Subtotal	10	15	2	1	2	0	0	7	2	4	7	1	5	11	3	3	27	7	14	1		1	
School of High Energy Accelerator Science	Accelerator Science	2	若干名	1		1	2		2	4	1	2	1	1	1	2	1	10	3	6				
	Materials Structure Science	3	若干名	1	1	1	1						2	1	2			4	2	3				
	Particle and Nuclear Physics	4	若干名				1		1	1			2	1	1			4	1	2	1		1	
	Subtotal	9	—	2	1	2	4	0	3	5	1	2	5	3	4	2	1	0	18	6	11	1		1
School of Multidisciplinary Sciences	Statistical Science	2	3							2	1							2	1	0				
	Polar Science	2	1															0	0	0				
	Informatics	4	6	4	2	2	3		2	9		4	10	2	6	11	1	3	37	5	17			
	Subtotal	8	10	4	2	2	3	0	2	11	1	4	10	2	6	11	1	3	39	6	17			
School of Life Science	Genetics	3	6	3	3	2	2	2	1	1		1	1			4	2	1	11	7	5			
	Basic Biology	3	6	1		1	1		1	1		1			4	2	3	7	2	6				
	Physiological Sciences	3	6							4	4	4	1		1			5	4	5				
	Subtotal	9	18	4	3	3	3	2	2	6	4	6	2	0	1	8	4	4	23	13	16			
School of Advanced Sciences	Evolutionary Studies of Biosystems	5	1										3	3	2			3	3	2	1			
	Subtotal	5	1										3	3	2			3	3	2	1			
	Total	41	59	12	7	9	10	2	7	34	11	16	31	12	20	43	15	11	130	47	63	6	2	4

*1 Female Students in Total *2 Monbukagakusho Scholarship Students in Total ** The year of a 3-year doctoral course.

Number of International Students

(As of May 1, 2017)

Country	1st year			2nd year			3rd year (1st year**)			4th year (2nd year**)			5th year (3rd year**)			Subtotal			Research Student		
	*1	*2		*1	*2		*1	*2		*1	*2		*1	*2		*1	*2		*1	*2	
Asia	11	7	8	8	1	6	31	10	14	26	12	16	38	14	9	114	44	53	2		1
India				1		1	5	1	4				4	1		10	2	5			
Indonesia	1	1	1				3	1	1	3	2	3	2	1		9	5	5			
Thailand	2	1	2				3	1	2	3	1	2	6	1	3	14	4	9	1		1
Pakistan	3	2	3	1		1										4	2	4			
Bangladesh	1	1		1		1										2	1	1			
Philippines										1						1	0	0			
Viet Nam	3	1	2				3		2	7	4	4	3	1	1	16	6	9			
Malaysia				1	1	1	1			1						3	1	1			
Korea							2	1	1				1			3	1	1			
China	1	1		4		2	13	5	4	9	4	7	20	8	5	47	18	18	1		
Taiwan							1	1		2	1		2	2		5	4	0			
Africa	1	0	1	0	0	0	0	0	0	0	0	0	0	0	0	1	0	1			
South Africa	1		1													1	0	1			
Oceania	0	0	0	0	0	0	0	0	0	1	0	1	1	0	0	2	0	1			
Australia													1			1	0	0			
New Zealand										1		1				1	0	1			
Europe	0	0	0	1	0	1	1	1	1	3	0	2	1	0	0	6	1	4	1	1	1
UK																0	0	0	1	1	1
Hungary				1		1										1	0	1			
France										2		1	1			3	0	1			
Belarus										1		1				1	0	1			
Russia							1	1	1							1	1	1			
Middle East	0	0	0	0	0	0	0	0	0	1	0	1	1	0	1	2	0	2	1		1
Iran													1		1	1	0	1			
Turkey										1		1				1	0	1	1		1
Latin America and the Caribbean	0	0	0	0	0	0	1	0	0	0	0	0	1	1	1	2	1	1			
Argentina							1									1	0	0			
Ecuador													1	1	1	1	1	1			
North America	0	0	0	1	1	0	1	0	1	0	0	0	1	0	0	3	1	1	2	1	1
Mexico																0	0	0	1	1	1
USA				1	1		1		1				1			3	1	1	1		
Total	12	7	9	10	2	7	34	11	16	32	13	20	42	14	11	130	47	63	6	2	4

*1 Female Students in Total *2 Monbukagakusho Scholarship Students in Total ** The year of a 3-year doctoral course.

International Exchange Agreements

SOKENDAI is promoting academic exchange and collaboration with other domestic and foreign universities through mutual agreements.

Academic Agreement with Foreign Institutions

University / Department [Country]	Corresponding Department	Contents	Date of Agreement	Validity
University of Science and Technology [Korea]	All Schools	Exchange of students and researchers	May 25, 2005 May 25, 2010	May 24, 2020
University of Bayreuth [Germany]	All Schools	Exchange of students and researchers	October 9, 2009 October 9, 2012	October 8, 2017
Chulalongkorn University Faculty of Science [Thailand]	School of Physical Sciences	Exchange of students and researchers	April 1, 2010	March 23, 2020
Kasetsart University Faculty of Science [Thailand]	School of Physical Sciences	Exchange of students and researchers	March 29, 2011	March 10, 2021
Indian Institute of Science Education and Research PUNE [India]	School of Life Science	Exchange of students and researchers	April 18, 2011	April 16, 2021
Mahidol University Faculty of Science [Thailand]	School of Physical Sciences	Exchange of students and researchers	March 20, 2014	March 19, 2019
Nanyang Technological University College of Science [Singapore]	School of Physical Sciences	Exchange of students and researchers	March 20, 2014	March 19, 2019
University of Malaya Faculty of Science [Malaysia]	School of Physical Sciences	Exchange of students and researchers	March 24, 2014	March 23, 2019
National University of Singapore Interactive and Digital Media Institute [Singapore]	The Center for the Promotion of Integrated Sciences	Exchange of researchers	December 9, 2016	December 8, 2021
VNU University of Science Faculty of Biology [Vietnam]	School of Advanced Sciences	Exchange of students and researchers	February 8, 2017	February 7, 2022
Vietnam National University of Agriculture Faculty of Animal Science [Vietnam]	School of Advanced Sciences	Exchange of students and researchers	February 15, 2017	February 14, 2022
Vietnam Academy of Social Sciences Institute of Archaeology [Vietnam]	School of Advanced Sciences	Exchange of researchers	February 20, 2017	February 19, 2022

Academic Agreement with Domestic Institutions

University / Institute	The Graduate University for Advanced Studies	Contents	Date of Agreement
Tokyo Institute of Technology All Schools	All Schools	Exchange of students	April 3, 1995
Ochanomizu University All Schools	All Schools	Exchange of students	April 3, 1995
Nagoya University Graduate School of Medicine	Department of Physiological Sciences of School of Life Science	Exchange of students	April 3, 1995
Nagoya University Graduate School of Engineering	School of Physical Sciences	Exchange of students	April 1, 2010
University of Tokyo Graduate School of Science	School of Physical Sciences / High Energy Accelerator Sciences / Multidisciplinary Sciences	Exchange of students	March 27, 1998
University of Tokyo Graduate School of Information Science and Technology	School of Physical Sciences / High Energy Accelerator Sciences / Multidisciplinary Sciences / Life Science / Advanced Sciences	Exchange of students	March 27, 1998
International Christian University Graduate School of Arts and Science	All Schools	Exchange of students	March 24, 2000
Kyoto University Graduate School of Asian and African Area Studies	Department of Regional Studies / Comparative Studies of School of Cultural and Social Studies	Exchange of students	April 1, 2005
Osaka University Graduate School of Human Sciences	Department of Regional Studies / Comparative Studies of School of Cultural and Social Studies	Exchange of students	April 1, 2005
Kobe University Graduate School of Intercultural Studies / Human Development and Environment	Department of Regional Studies / Comparative Studies of School of Cultural and Social Studies	Exchange of students	April 1, 2005
Kyoto Bunkyo University Graduate School of Anthropology	Department of Regional Studies / Comparative Studies of School of Cultural and Social Studies	Exchange of students	April 1, 2005
Chiba University Graduate School of Humanities and Study of Public Affairs	School of Cultural and Social Studies	Exchange of students	April 1, 2005
Chiba University Graduate School of Science and Engineering	School of Physical Sciences	Exchange of students	April 1, 2010
Japan Advanced Institute of Science and Technology Graduate School of Advanced Science and Technology	Department of Informatics of School of Multidisciplinary Sciences	Exchange of students	April 1, 2009
Tsuda College Graduate Program in Mathematics and Computer Science	School of Multidisciplinary Science	Exchange of students	April 1, 2015
Waseda University School of Fundamental Science and Engineering	School of Multidisciplinary Science	Exchange of students	April 1, 2015
Kyushu University Graduate School of Pharmaceutical Sciences	School of Life Science	Exchange of students	April 1, 2017



National University SOKENDAI

The Graduate University for Advanced Studies

Shonan Village, Hayama, Kanagawa 240-0193 Japan

Tel.81-46-858-1500 / Fax.81-46-858-1542

<https://www.soken.ac.jp/>

Access (Hayama Campus)

